



## REQUEST FOR QUOTATION GRINDER

Model: Grindlazer DC89G 9 Horse Power with PCD Nano – Round 8” Cut Drum Assembly

The City of Bell Gardens (“City”) is requesting bids for a Grinder, Model: Grindlazer DC89G 9 Horse Power with PCD Nano – Round 8” Cut Drum Assembly . Refer to the specifications for additional features. The Grinder must be delivered by June 30, 2023 to City of Bell Gardens Public Works Yard, 8327 Garfield Avenue, Bell Gardens, CA 90201.

### Submittal Information

Sealed bids (using City quotation form) must be received by the office of the City Clerk, City of Bell Gardens, 7100 Garfield Avenue, Bell Gardens, CA 90201, no later than: Thursday, June 1, 2023, at 4:00 p.m. Bids must be submitted in a sealed envelope. Bids received after the time and date indicated above shall be deemed nonresponsive and returned unopened.

The complete RFQ package is posted on the City’s website page (View RFP’s and Bids) at <https://www.bellgardens.org/i-want-to/view-bids-rfps/rfps-and-bids> If any changes or updates to the RFQ are made, they will be posted on this same webpage.

### QUESTIONS

Questions regarding the information contained in the RFQ document must be submitted by email, and addressed to: Carlos Marin, Superintendent [cmarin@bellgardens.org](mailto:cmarin@bellgardens.org) *All questions must be received by 4:00 p.m. on May 25, 2023.* Questions will be responded to in writing and posted on the City’s website page (View RFP’s and Bids) at <https://www.bellgardens.org/i-want-to/view-bids-rfps/rfps-and-bids>.

Telephone requests for information or inquiries will not be allowed. The intent behind this requirement is to ensure that bidders have available to them the same information and no inconsistent, incomplete or misinformation is communicated to any team. Bidders may not rely on any oral interpretations given by any City employee and may only rely upon officially issued, written addenda.

### RIGHTS OF CITY

The City of Bell Gardens reserves the right to reject any and all bids, or delete portions of any and all bids or waive any informality or irregularity in the bid or the bid procedures

and shall be the sole judge of the bids received. The City reserves the right to award to the lowest responsive Bidder as deemed by the City.

# Quotation Form

## Grinder

Pricing shall be valid for **sixty (60) days** from date bid proposal is submitted to the CITY.

ITEM	DESCRIPTION	BID PRICE TOTAL
1	Grindlazer DC89G 9 Horse Power with PCD Nano – Round 8” Cut Drum Assembly	\$
2	Applicable taxes and fees:	\$
3	Bid Grand Total (inclusive of all taxes and fees)	\$

Provide Grinder Delivery Date: \_\_\_\_\_

### BIDDER'S AUTHORIZATION:

COMPANY NAME: \_\_\_\_\_

NAME AND TITLE OF PERSON AUTHORIZED TO SUBMIT BID ON BEHALF OF

COMPANY: \_\_\_\_\_

SIGNATURE: \_\_\_\_\_

ADDRESS: \_\_\_\_\_

PHONE: \_\_\_\_\_

FAX: \_\_\_\_\_

EMAIL: \_\_\_\_\_

BID DATE: \_\_\_\_\_

Specifications are as follows:

<b>GrindLazer Standard DC89 G (25M843)</b>		
<b>Noise level (dBa)</b>		
Sound power	107 dBa per ISO 3744	
Sound pressure	92 dBa measured at 3.1 feet (1m)	
<b>Vibration level*</b>		
Right/Left Hand	9.5 m/sec <sup>2</sup>	
* Vibration measured per ISO 5349 based on 8 hr daily exposure		
<b>Dimensions/Weight (unpackaged)</b>	<b>US</b>	<b>Metric</b>
Height	40 in.	102 cm
Length	42 in.	107 cm
Width	16 in.	41 cm
Weight	150 lb	68 kg

# PCD NANO-ROUND

8" PCD NANO-ROUND DRUM  
FOR USE ON DC8 SCARIFIERS

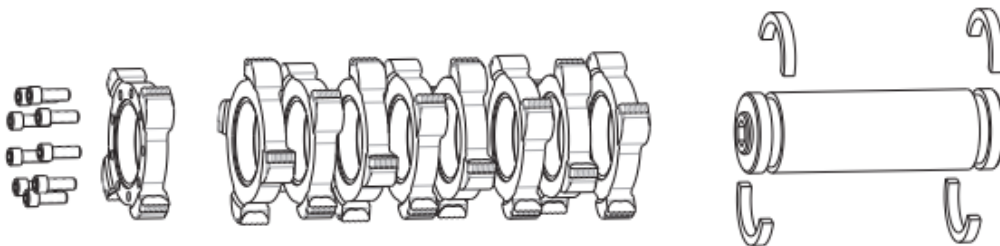
*STANDARD  
SERIES*



**GRINDLAZER®**

FULLY ASSEMBLED DRUM	CUTTER TYPE	CUT WIDTH
25T442	PCD Nano-Round	8 in

COMPONENTS	PART #	QTY
Inside Cutter Plate	20A043	8
Outside Cutter Plate	20A046	1
Mandrel	20A047	1
Retainer Ring	17X361	4
1/2-13 Socket Head Screw	C19837	9





# GRINDLAZER STANDARD SERIES DC87 G AND DC89 G

The GrindLazer Standard DC87 G (6.5 HP) and DC89 G (9.0 HP) Series scarifiers are great options for those smaller traffic marking removal jobs, trip hazard removal, and for preparing a surface before applying new traffic markings.

## **JBSITE TOUGH DESIGN**

**Heavy-Duty All-Steel Frame**

## **CONTRACTOR-PREFERRED POWER**

**Durable Honda® Power with Cyclone™ Filter**

- Cyclone filter protects the engine from harmful airborne dust

## **EASY MICRO AND MACRO ADJUSTMENTS**

**Dual Depth Control**

- Multi-position lever and rotating knob controls

## **REDUCED VIBRATION FOR ALL-DAY COMFORT**

**Comfort Grip Handles**

## **USER-FRIENDLY OPERATION**

- Adjustable handlebar to fit different operators
- Easy-to-reach throttle control

## **BUILT-IN APPLICATION FLEXIBILITY**

**Swivel and Fixed Front Wheel**

- Swivel Wheel for feathering applications
- Fixed Wheel for straight line removal

## **MAINTENANCE-FREE DESIGN**

**Sealed Main Bearing**

- Long life and ease of use

## **DURABLE HIGH-TORQUE POWER TRANSFER**

**Triple Drive Belts**

## **DUST REMOVAL**

- Vacuum port for LazerVac vacuum system

## **EASY-TO-READ GAUGES**

**Dual Purpose Tachometer and Hour Meter**

- Ideal for maintenance—ensuring your equipment is in top shape
- Displays engine RPMs while running



Standard DC89 G shown

POWERED BY HONDA

STANDARD SERIES GRINDLAZERS	PART #
DC87 G (bare)	25M842
DC89 G (bare)	25M843

STANDARD SERIES ACCESSORIES	PART #
Dust Suppression Water Kit	25N367
Edger Kit	25M933
Steel Beam, 2" Fine Edger Drum	25N442
Carbide Flail, 2" Medium Edger Drum	25N443
Carbide Flail, 2" Fine Edger Drum	25N444