

TRAFFIC & SAFETY COMMISSION

CITY OF BELL GARDENS

**City Council Chambers
7100 Garfield Avenue
Bell Gardens, CA 90201**

**Meeting
Tuesday, June 7, 2022
5:30 p.m.**

NOTE: *The City of Bell Gardens has various resources to accommodate disabled persons attending a City Meeting. The Council Chamber is equipped with an electronic system for persons needing assistance with hearing, as well as for persons requesting a Spanish translation of the meeting. The Public Works Department will make a large print agenda or have a sign language interpreter available, with a one working day advance notice prior to the date of the meeting.*

On March 4, 2020, Governor Newsom proclaimed a State of Emergency in California as a result of the threat of COVID-19. On September 16, 2021, Governor Newsom signed Assembly Bill 361 ("AB 361"), which was effective immediately and amends Government Code § 54953 to allow a local legislative body to hold public meetings via teleconferencing and to make public meetings accessible telephonically or otherwise electronically to all members of the public seeking to observe and to address the local legislative body. Pursuant to AB 361, please be advised that members of the Bell Gardens Traffic & Safety Commission may be participating in meeting telephonically. The public may view the meeting and participate in public remotely.

In order to observe and/or offer public comment may request such reasonable modification, accommodation, aid, or service by contacting Veronica Sanchez, Commission Secretary by telephone at 562-806-7770 or via email to vsanchez@bellgardens.org no later than one (1) hour before the scheduled meeting.

The City Hall facility of the City of Bell Gardens complies with the requirements of the Americans with Disabilities Act. If other accommodations are needed, please contact the office of the Public Works Department, or the ADA Coordinator in the Personnel Office.

TRAFFIC & SAFETY COMMISSION

Chairperson David Heredia
Vice Chairperson Raul Velasco
Commissioner Carlos Jose Barrera
Commissioner Jayson Gavilanes
Commissioner Amy Sanchez

CITY STAFF

Grissel Chavez, Director of Public Works
Douglas Benash, P.E. City Engineer
Veronica Sanchez, Secretary

AGENDA
Meeting
TRAFFIC & SAFETY COMMISSION

1. CALL TO ORDER
2. ROLL CALL
3. INVOCATION
4. PLEDGE OF ALLEGIANCE
5. REPORT FROM SECRETARY ON POSTING AGENDA
6. PUBLIC COMMENTS ON AGENDA AND NON-AGENDA ITEMS
7. APPROVAL OF MINUTES OF APRIL 5, 2022
8. APPROVAL OF MINUTES OF MAY 3, 2022
9. TRAFFIC SAFETY ANALYSIS – REQUEST FOR SPEED HUMPS ON IRA AVENUE
(LOVELAND ST TO LUBEC ST)
10. COMMENTS FROM STAFF
11. COMMENTS FROM COMMISSIONERS
12. ADJOURNMENT TO NEXT SCHEDULED MEETING, TUESDAY, JULY 5, 2022

Staff Reports or other documentation regarding agenda items are available for view at www.bellgardens.org.

**MINUTES OF THE CITY OF BELL GARDENS
TRAFFIC AND SAFETY COMMISSION MEETING**

April 5, 2022

- CALL TO ORDER:** Chairperson Heredia called the Traffic & Safety Commission Meeting to order at 5:33 p.m.
- ROLL CALL:** Secretary Veronica Sanchez took roll call.
- PRESENT:** Chairperson Heredia, Vice-Chairperson Velasco, and Commissioner Carlos Jose Barrera were present. Grissel Chavez, Director of Public Works; Dennis Barnes, Traffic Engineer; and Veronica Sanchez, Secretary were also present.
- INVOCATION:** Ms. Chavez led the invocation.
- PLEDGE OF ALLEGIANCE:** Commissioner Barrera led the Pledge of Allegiance.
- POSTING OF AGENDA:** The agenda was posted as prescribed by law.
- PUBLIC AGENDA AND NON-AGENDA ITEMS:** No comments were received.
- APPROVAL OF MINUTES OF MARCH 1, 2022:** Vice Chair Velasco made the motion to approve and Commissioner Barrera seconded the motion. Secretary Sanchez took roll call vote. AYES: Heredia, Velasco, and Barrera.
- TRAFFIC SAFETY ANALYSIS- Request for Speed Humps on Perry Road (Loveland to Foster Bridge):** Ms. Chavez deferred to Dennis Barnes, Traffic Engineer to present the report. The Public Works Department received a request for speed hump installation staff provided the resident the speed hump policy. Soon after the signed petition was received from residents along Perry Road from Loveland to Foster Bridge Blvd due to speeding concerns. Figure 1 shows the studied area. In accordance City policy, the criteria for installation is that the street be residential, width not be more than 40 feet, no curves, traffic volumes met, speed limits at 25 MPH, speeds measured greater than 8 MPH or more, no transit route and 51% resident support. Traffic volumes were recorded on March 24th thru March 27th. 3,228 vehicles were recorded on Thursday and 2,596 on Sunday. The 85th percentile speed recorded was 33 MPH. Based on the

qualifying results, three potential locations for new speed humps based on a street block length of approximately 1, 177 feet from Loveland Street to Foster Bridge. The proposed location of the speed hump are based on engineering criteria established by the Institute of Transportation Engineers. Figure 4, 5 and 6 identifies the location of the 3 speed humps. The ITE dictates that speed humps should be 250 feet from a stop or traffic light, which is where the first speed hump is identified, 250 feet north of Loveland, the second speed hump 530 feet from Loveland and the third 867 feet north of Loveland. Therefore, the recommendation to the commission is to give tentative approval for the installation of the three speed humps, pending the outcome of sending out notices to all homes fronting Perry Road (Loveland to Foster Bridge) confirming their approval or denial. Failure to meet the required 51% percent support would mean denial and would make this a receive and file. If the support is received, then the item will be present to City Council for consideration and final approval.

Vice Chair Velasco asked if parking would be affected. Mr. Barnes explained that parking is permissible on the hump itself.

Chair Heredia agreed that it's a good location considering the proximity to the Park.

Commissioner Barrera added that it is also close to school zone and hopes that residents do their part in supporting installation.

Vice Chair Velasco made the motion to approve; and Commissioner Barrera seconded the motion. Secretary Sanchez took roll call vote. AYES: Heredia, Velasco, and Barrera.

COMMENTS FROM STAFF:

Ms. Chavez updated the Commission on the two items from the previous meeting: the installation of stop signs at Gallant and Gephart have been completed and the red curb on Florence Avenue is scheduled to be installed next week.

COMMENTS FROM THE COMMISSIONERS:

No comments.

ADJOURNMENT:

Chairperson Heredia adjourned the meeting at 5:47 p.m. to the next scheduled meeting of May 3, 2022.

APPROVED BY:

David Heredia, Chairperson

Submitted by:

Veronica Sanchez, Secretary

**MINUTES OF THE CITY OF BELL GARDENS
TRAFFIC AND SAFETY COMMISSION MEETING**

May 3, 2022

CALL TO ORDER: Chairperson Heredia called the Traffic & Safety Commission Meeting to order at 5:32 p.m.

ROLL CALL: Secretary Veronica Sanchez took roll call.

PRESENT: Chairperson Heredia, Commissioner Carlos Jose Barrera, Commissioner Jayson Gavilanes and Commissioner Amy Sanchez were present. Dennis Barnes, Traffic Engineer; and Veronica Sanchez, Secretary were also present.

INVOCATION: Secretary Sanchez led the invocation.

PLEDGE OF ALLEGIANCE: Commissioner Sanchez led the Pledge of Allegiance.

POSTING OF AGENDA: The agenda was posted as prescribed by law.

PUBLIC AGENDA AND NON-AGENDA ITEMS: No comments were received.

APPROVAL OF MINUTES OF APRIL 5, 2022: Commissioner Gavilanes and Commissioner Sanchez abstained from voting as they were not present. Carried over to next Traffic & Safety Commission meeting.

**TRAFFIC SAFETY ANALYSIS-
Scout Avenue at Clara Street
Request for Crosswalk on
Scout Avenue:**

Dennis Barnes, Traffic Engineer presented the report. The Public Works Department received a request for installation of a crosswalk at the intersection of Scout Avenue and Clara Street; specifically, to facilitate seniors that walk to and from the Senior Center located there. A site investigation was completed to confirm geometric conditions and any constraints for the installation. Figure 1 shows the general area. Scout Avenue is a wide two-lane collector street with speed limit of 30 MPH, there is industrial buildings on both sides and parking is allowed on both sides of the street. The last speed survey reported traffic volume at 5,786 vehicles. A 1% growth factor per year to recorded traffic volume would estimate the average daily traffic (ADT) volume of 6,140 vehicles per day on Scout Avenue. After careful review it is recommended that the Traffic & Safety Commission approve the

installation of a new white ladder type crosswalk on Scout Avenue at Clara Street, as shown in Figure 2 and 3 with white clear markers on each side on Scout Avenue and repainting the existing red curb on both sides of the intersection approach at the new crosswalk. The estimated cost for the installation markers and repainting is approximately \$350 and is available in the Street Maintenance budget.

Chair Heredia was surprised that no crosswalk there, it should be a good addition.

Commissioner Gavilanes made the motion to approve; and Commissioner Barrera seconded the motion. Secretary Sanchez took roll call vote. AYES: Heredia, Barrera, Gavilanes and Sanchez.

**TRAFFIC SAFETY ANALYSIS-
Request for On-Street Disabled
Persons Parking at Bell Gardens
Elementary School on Quinn
Street:**

Dennis Barnes, Traffic Engineer presented the report. The Public Works Department received a request for disabled persons parking space (blue curb) on Quinn Street that can serve the parents and caretakers of the school children attending Bell Gardens Elementary School. The School Principal confirmed that the school has one disabled persons parking inside the staff parking lot. However, the lot is kept locked as it is only accessed by school staff and doesn't serve parents. A site investigation was completed. Figure 1 shows an aerial view, the school is located on Quinn Street just west of Jaboneria Road. The School Principal requested the location for the proposed blue curb be near Gate 2 school entrance. Figure 2 and 3 shows the location. A twenty-eight-foot blue curb is proposed to allow for the in and out of traffic instead of the standard 24-foot curb. Also recommended is the installation of an R99C sign that includes the fine. The fiscal impact is estimated at \$250 and is available in the current budget. Therefore, it is recommended that the Commission approve for City Council consideration the installation of a 28-foot blue curb on Quinn Street in front of Bell Gardens Elementary near gate 2 with the installation of a R99C sign on a telespar post.

Commissioner Sanchez agreed with the installation. Chair Heredia remembers staff recently installed a similar one for Suva Intermediate.

Commissioner Barerra made the motion to approve; and Commissioner Sanchez seconded the motion. Secretary Sanchez took roll call vote. AYES: Heredia, Barrera, Gavilanes and Sanchez.

**TRAFFIC SAFETY ANALYSIS-
Request for Green Curb at
8056 Garfield Avenue:**

Dennis Barnes, Traffic Engineer presented the report. The Department received a request from the business owner of Pogame Barbershop at 8056 Garfield Avenue. The request was for green curb in front of the business. The owner reported that vehicles park for more than 12 hour periods at times making it difficult for deliveries by suppliers and customers to find parking. The property owner confirmed support for the request. A site investigation was completed, and parking was not available as shown on April 20th at 5:30pm as shows on Figure 2. Due to the high parking demands and the large traffic volumes, it was determined that there is a need for green zone parking at 8056 Garfield Avenue. The recommended green curb will be in effect from 8 am to 6 pm except for Sundays and Holidays with a 20-minute time limit. Having the green curb time restriction end at 6 pm will allow both business patrons and residents returning home from work to utilize the parking space. Based on the available information, facts and field review, it is recommended that the Commission approve for City Council consideration the installation of 24 feet of green curb along the business frontage at 8056 Garfield Avenue. The parking space shall be stenciled on top of the curb in white paint in accordance with the Municipal Code and a posted sign R32F indicating “ 20 minute parking 8 am to 6pm, Monday to Saturday’ except Sundays and Holidays be installed as well to notice the residents. Additionally, request Police Department conduct parking enforcement. The approximate cost for the installation will be \$250 and is available in the current budget.

Chair Heredia noted that there is a discount store next door to the barber shop and should they have the desire for green curb could they be accommodated? Mr. Barnes explained that staff did think of this and reached Commissioner Gavilanes asked how long will the police enforcement take place. Mr. Barnes explained that typically when new parking restrictions are in place there is a period of 2 weeks of monitoring and giving verbal warning before the enforcement period begins.

Commissioner Gavilanes made the motion to approve; and Commissioner Barrera seconded the motion. Secretary Sanchez took roll call vote. AYES: Heredia, Barrera, Gavilanes and Sanchez.

COMMENTS FROM STAFF:

Secretary Sanchez updated the Commission on the two items from the previous meeting: Perry Road (Loveland to Foster Bridge) speed hump notifications were hand delivered on the 20th and residents have until the 16th of May to return their votes. Speed humps that were approved on Suva Street from Scout to Foster Bridge are scheduled for installation next week by in-house staff. Lastly, staff welcomed the new Commissioner Amy Sanchez.

COMMENTS FROM THE COMMISSIONERS:

Commissioner Gavilanes was happy to see everyone, hoping everyone is in good health and sending positive vibes.

Chairperson Heredia thanked everyone for participating and was happy to see a few more items on the agenda.

ADJOURNMENT:

Chairperson Heredia adjourned the meeting at 5:58 p.m. to the next scheduled meeting of June 7, 2022.

APPROVED BY:

David Heredia, Chairperson

Submitted by:

Veronica Sanchez, Secretary



CITY OF BELL GARDENS
Public Works Department
MEMORANDUM

TO: Traffic and Safety Commission
FROM: Grissel Chavez, Director of Public Works
Dennis D. Barnes, City Traffic Engineer
SUBJECT: TRAFFIC SAFETY ANALYSIS
Request for Speed Humps on Ira Avenue (Loveland St. to Lubec St.)
DATE: June 7, 2022

BACKGROUND

The Public Works Department received a request from a resident for the installation of speed humps on Ira Avenue, from Loveland Street to Lubec Street. He expressed concerns about vehicles speeding on this street. Staff informed him about the City's current speed hump policy. Figure 1 provides an aerial view of the Ira Avenue study area in red outline from Loveland Street to Lubec Street.



Figure 1 – Aerial View of Ira Avenue from Loveland Street to Lubec

ANALYSIS OF REQUEST:

In accordance with City policy, each speed hump application is reviewed on a case-by-case basis and submitted to the Traffic and Safety Commission for review and consideration

The following information summarizes some of the key points reviewed during the evaluation process by the City Traffic Engineer:

- Local, residential street with one travel lane in each direction.
- Roadway width is not more than 40 feet.
- There are no curves that would make it difficult for drivers to see the speed humps.
- Traffic volumes between 500 and 3,500 vehicles per day (updated guidelines).
- Posted speed limit of 25 mph.
- Actual measured 85th percentile speeds greater than 25 mph by 8 mph or more.
- Speed humps shall not be installed on roadways with grades over six percent.
- Street is not a transit route or primary emergency response route.
- Citizen Support: Prior to the installation of speed humps, at least fifty-one (51) percent of residents residing along the affected street should support the request (one vote per each legal address).
-

Figure 2 provides an aerial view of the street width of Ira Avenue illustrating that the street meets the speed hump policy requirement of being less than 40 feet wide.



Figure 2 – Aerial View of the Ira Avenue Street Width Curb to Curb

EXISTING TRAFFIC VOLUME CONDITIONS AND SPEED PROFILE:

In response to the request, the City Traffic Engineer ordered traffic volume counts and a speed profile for Ira Avenue from Loveland Street to Lubec Street. The purpose was to confirm the extent of the reported speeding activity on Ira Avenue and review the traffic volume data that is needed to determine if the local street meets the City's speed hump policy. The collected traffic volume data and speed profile sheets are attached to this report.

Ira Avenue is a local north-south residential street providing one lane of travel in each direction with a currently posted speed limit of 25 miles per hour (MPH) and is approximately 36.1 feet wide from curb to curb as shown in Figure 2. There are single family homes on both sides of the street, and it is a wide-open street with no restrictions that would cause a driver to slow down, other than the parking that is allowed on both sides of the street.

The results of the average daily traffic (ADT) volume count over a four-day period show that Ira Avenue carries an average daily traffic volume ranging from 2,292 vehicles per day (VPD) on a Thursday to 1,776 on a Sunday. The traffic volumes were recorded starting May 19-22, 2022. The recorded speed profile measurements for the combined directions of northbound and southbound Ira Avenue indicate an 85th percentile speed varying from 33-35 miles per hour (MPH) or greater than the posted speed limit of 25 MPH by 8 MPH, which reflects speeding activity and also meets the City's speed hump policy criteria. The measured street width and recorded traffic volumes on Ira Avenue also meet the City policy.

The following definitions explain some of the terms which are referenced in the attached speed profile report:

50th Percentile – The median speed of vehicles on Ira Avenue.

85th Percentile – The critical speed is the 85th percentile. Motorists exceeding the 85th percentile speed are driving faster than is safe under prevailing conditions. This percentile may serve as the guide for establishing the posted speed limit.

Pace – The pace is the 10 MPH range of speeds containing the largest number of observations. This can usually be determined by visual inspection of the Vehicle Speed Survey Sheet. After determining the pace, it is useful to compute the percentage of vehicles in the pace, the percentage over the pace and the percentage under the pace. A normal speed distribution will contain 70% of the sample within the pace with 15% above and 15% below.

LOCATION OF NEW SPEED HUMPS ON IRA AVENUE

Based on the qualifying results of the traffic volume and speed surveys, the City Traffic Engineer identified three (3) potential locations for new speed humps based on a street block length of approximately 1,234 feet from Loveland Street to Lubec Street. The proposed locations of the speed humps shown on figures 4, 5, and 6, are based on experience of the Traffic Engineer and engineering criteria published by the Institute of Transportation Engineers (ITE) that will reduce existing speeds along Ira Avenue to acceptable limits near the "prima facie" speed limit of 25 miles per hour (MPH).

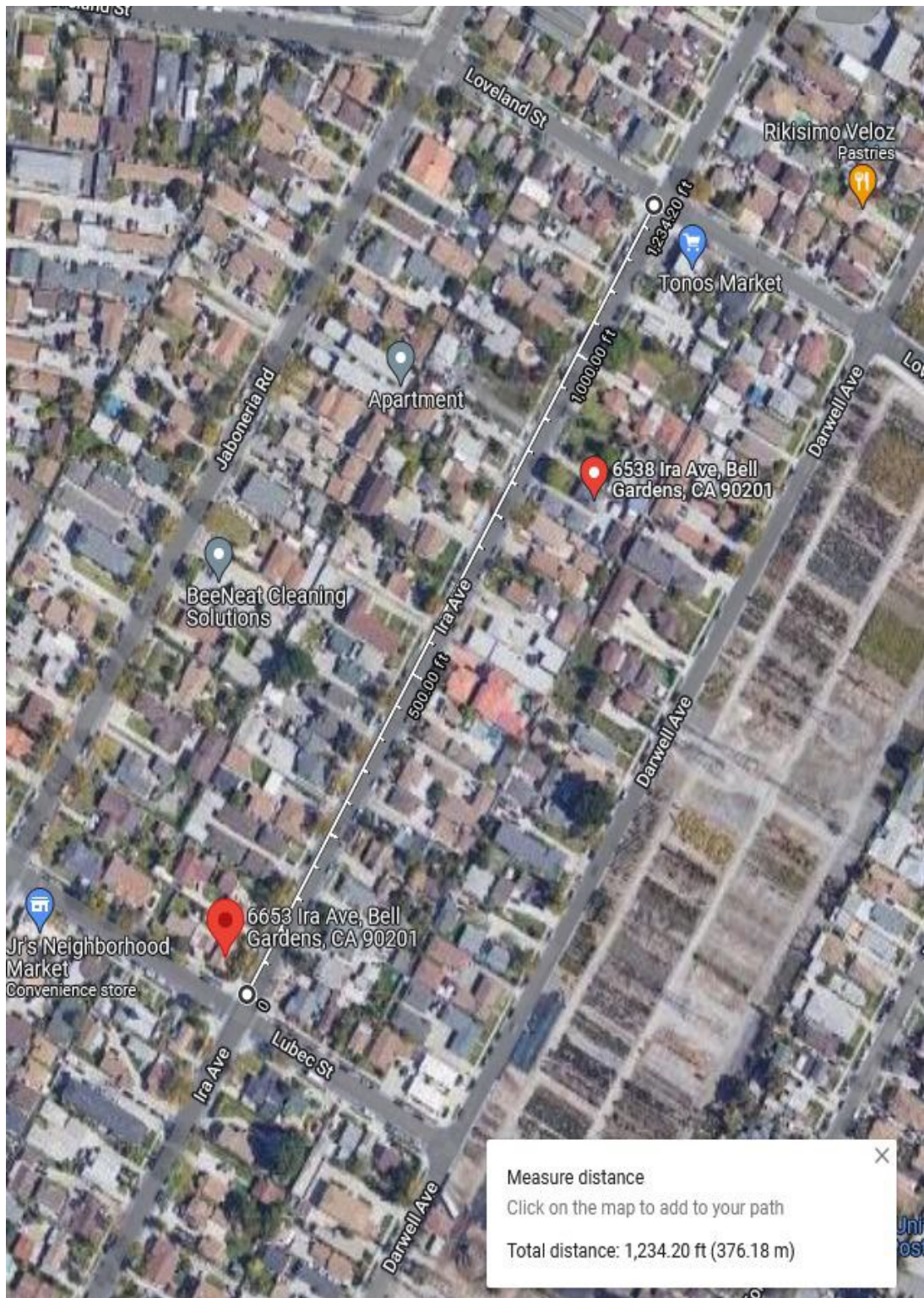


Figure 3 – Aerial View of Ira Avenue (Loveland St. to Lubec St.) Block Length of 1,234 Feet



Figure 4 – Location of 1st Speed Hump at 6630 Ira Street 253 Feet North of Lubic Street



Figure 5 – Location of 2nd Speed Hump at 6560 Ira Avenue 600 Feet North of Lubic St.



Figure 6 – Location of 3rd Speed Hump at 6524 Ira Avenue 966 Feet North of Lubec Street

RECOMMENDATIONS:

Based on a review of available information, new traffic volume and speed data, and a field review by the City Traffic Engineer, the following recommendations are presented to the Traffic and Safety Commission for review and approval.

1. The initial criteria for the required traffic volume and speeding data for consideration of speed humps has been met. Staff recommends that the Traffic and Safety Commission give preliminary approval of the three (3) proposed speed humps shown in Figures 4, 5 and 6 on Ira Avenue.
2. Staff recommends that City staff send out a Public Notice survey to all the fronting Ira Avenue residents (from Loveland Street to Lubec Street) requesting their confirmation of approval (or denial) of the proposed speed hump installations on Ira Avenue. Failure to meet the required 51 percent support would mean denial of the speed hump request on Ira Avenue at this time. The report would then be noted as “Receive and file” and placed in city records.

If the required 51% support is obtained, then the item would be presented to the City Council for consideration and approval.

FISCAL IMPACT: None.

ATTACHMENTS:

1. Traffic volume counts and speed survey data sheets for Ira Avenue.

Traffic Volume Counts and Speed Survey Data Sheets for Ira Avenue

City Traffic Counters
www.ctcounters.com

Northeast

Ira Avenue
Btwn Loveland St & Lubec St

Site Code: 6603 Ira Avenue

Page 1

Start Time	15	20	25	30	35	40	45	50	55	60	65	70	75	999	Total
5/19/2022	0	0	0	0	1	2	0	0	0	0	0	0	0	0	3
0:15	0	0	0	2	1	0	0	0	0	0	0	0	0	0	3
0:30	0	0	0	1	0	1	0	0	0	0	0	0	0	0	2
0:45	0	0	0	0	1	0	0	0	0	0	0	0	0	0	1
1:00	0	0	0	3	3	3	0	0	0	0	0	0	0	0	9
1:15	0	0	0	0	0	0	0	0	0	0	0	0	0	0	0
1:30	0	0	0	1	0	0	0	0	0	0	0	0	0	0	1
1:45	0	0	0	0	2	0	0	0	0	0	0	0	0	0	2
2:00	0	0	0	0	0	0	1	0	0	0	0	0	0	0	1
2:15	0	1	0	1	1	0	0	0	0	0	0	0	0	0	4
2:30	0	0	0	0	0	0	0	0	0	0	0	0	0	0	0
2:45	0	0	1	0	1	0	0	0	0	0	0	0	0	0	2
3:00	0	1	1	1	3	0	0	0	0	0	0	0	0	0	6
3:15	0	0	0	0	0	0	0	0	0	0	0	0	0	0	0
3:30	0	0	0	0	1	0	0	0	0	0	0	0	0	0	1
3:45	0	1	1	0	0	0	0	0	0	0	0	0	0	0	2
4:00	0	0	0	0	0	0	0	0	0	0	0	0	0	0	0
4:15	0	1	1	0	1	0	0	0	0	0	0	0	0	0	3
4:30	0	0	1	0	0	0	0	0	0	0	0	0	0	0	1
4:45	0	0	0	0	0	2	0	0	0	0	0	0	0	0	2
5:00	0	1	0	3	1	1	1	0	0	0	0	0	0	0	7
5:15	0	1	1	3	1	4	2	0	0	0	0	0	0	0	12
5:30	0	0	1	2	1	0	0	0	0	0	0	0	0	0	4
5:45	0	0	0	1	1	0	0	0	0	0	0	0	0	0	2
6:00	0	2	0	0	3	2	0	0	0	0	0	0	0	0	7
6:15	0	0	4	1	2	0	0	0	0	0	0	0	0	0	9
6:30	0	0	2	3	7	4	0	1	0	0	0	0	0	0	17
6:45	0	1	0	2	4	1	1	1	0	0	0	0	0	0	10
7:00	0	1	8	9	13	8	3	2	0	0	0	0	0	0	44
7:15	0	1	0	5	5	4	0	0	0	0	0	0	0	0	15
7:30	0	2	4	7	6	2	0	0	0	0	0	0	0	0	21
7:45	0	0	5	11	14	0	0	1	0	0	0	0	0	0	31
8:00	1	4	9	17	7	3	1	0	0	0	0	0	0	0	42
8:15	1	7	18	40	32	9	1	1	0	0	0	0	0	0	109
8:30	2	1	6	13	12	4	0	0	0	0	0	0	0	0	38
8:45	0	3	3	11	7	0	0	0	0	0	0	0	0	0	24
9:00	0	2	4	4	2	1	1	0	0	0	0	0	0	0	14
9:15	3	1	6	6	2	1	0	0	0	0	0	0	0	0	19
9:30	5	7	19	34	23	6	1	0	0	0	0	0	0	0	95
9:45	0	0	6	4	1	0	0	0	0	0	0	0	0	0	11
10:00	0	3	3	4	3	1	0	0	0	0	0	0	0	0	14
10:15	0	2	1	2	1	1	0	0	0	0	0	0	0	0	7
10:30	0	4	3	0	3	3	3	0	0	0	0	0	0	0	16
10:45	0	9	13	10	8	5	3	0	0	0	0	0	0	0	48
11:00	0	2	0	4	4	1	0	0	0	0	0	0	0	0	11
11:15	0	2	1	0	6	4	2	0	0	0	0	0	0	0	15
11:30	0	3	3	3	4	1	1	0	0	0	0	0	0	0	15
11:45	0	1	3	2	1	2	0	0	0	0	0	0	0	0	9
12:00	0	8	7	9	15	8	3	0	0	0	0	0	0	0	50
12:15	0	0	3	6	2	0	0	0	0	0	0	0	0	0	11
12:30	1	2	1	3	1	1	0	0	0	0	0	0	0	0	9
12:45	0	2	4	5	3	0	1	0	0	0	0	0	0	0	15
Total	8	41	83	133	118	48	15	3	0	0	0	0	0	0	449

Northeast

Ira Avenue
 Btwn Loveland St & Lubec St

Site Code: 6603 Ira Avenue

Page 2

Start Time	15	16	21	26	31	36	41	46	51	56	61	66	71	76	999	Total
12:00 PM	0	0	2	1	4	1	0	0	0	0	0	0	0	0	0	8
12:15	1	3	6	5	0	1	0	0	0	0	0	0	0	0	0	16
12:30	0	0	2	6	6	1	0	0	0	0	0	0	0	0	0	15
12:45	0	4	3	2	2	0	0	0	0	0	0	0	0	0	0	11
13:00	1	7	13	14	12	3	0	0	0	0	0	0	0	0	0	50
13:15	0	2	4	4	4	1	0	0	0	0	0	0	0	0	0	16
13:30	0	0	6	2	5	1	0	0	0	0	0	0	0	0	0	15
13:45	0	2	7	5	4	0	0	0	0	0	0	0	0	0	0	14
14:00	1	7	19	14	19	3	0	0	0	0	0	0	0	0	0	63
14:15	1	1	5	6	3	0	0	0	0	0	0	0	0	0	0	16
14:30	0	1	6	9	6	2	0	0	0	0	0	0	0	0	0	24
14:45	1	2	12	10	7	2	0	0	0	0	0	0	0	0	0	34
15:00	2	4	25	32	26	7	0	0	0	0	0	0	0	0	0	96
15:15	4	4	7	11	6	0	0	0	0	0	0	0	0	0	0	32
15:30	4	4	5	9	2	0	0	0	0	0	0	0	0	0	0	27
15:45	4	5	5	5	4	4	0	0	0	0	0	0	0	0	0	24
16:00	13	13	20	31	21	9	0	0	0	0	0	0	0	0	0	107
16:15	0	0	6	10	5	1	1	0	0	0	0	0	0	0	0	23
16:30	0	5	5	7	4	3	1	0	0	0	0	0	0	0	0	25
16:45	1	0	6	5	6	1	0	0	0	0	0	0	0	0	0	19
17:00	0	2	23	29	21	6	4	0	0	0	0	0	0	0	0	91
17:15	0	2	4	5	4	4	2	0	0	0	0	0	0	0	0	21
17:30	0	2	2	2	2	3	0	0	0	0	0	0	0	0	0	15
17:45	0	2	2	2	2	3	0	0	0	0	0	0	0	0	0	11
18:00	0	9	10	11	14	15	2	0	0	0	0	0	0	0	0	61
18:15	0	2	5	6	7	3	1	0	0	0	0	0	0	0	0	24
18:30	0	3	1	3	9	6	2	0	0	0	0	0	0	0	0	24
18:45	0	4	4	9	2	0	0	1	0	0	0	0	0	0	0	20
19:00	0	1	7	7	6	0	0	0	0	0	0	0	0	0	0	21
19:15	0	10	17	25	24	9	3	1	0	0	0	0	0	0	0	89
19:30	0	2	1	10	2	1	0	0	0	0	0	0	0	0	0	16
19:45	0	0	3	2	0	0	1	0	0	0	0	0	0	0	0	6
20:00	0	0	5	5	3	1	0	0	0	0	0	0	0	0	0	14
20:15	0	1	2	7	3	1	0	0	0	0	0	0	0	0	0	14
20:30	0	3	11	24	8	3	1	0	0	0	0	0	0	0	0	50
20:45	0	0	2	4	2	2	0	1	0	0	0	0	0	0	0	11
21:00	0	4	3	7	6	4	0	0	0	0	0	0	0	0	0	24
21:15	1	2	4	3	1	2	0	0	0	0	0	0	0	0	0	13
21:30	0	3	2	2	1	0	1	0	0	0	0	0	0	0	0	9
21:45	1	9	11	16	10	8	1	1	0	0	0	0	0	0	0	57
22:00	0	3	1	2	1	0	0	0	0	0	0	0	0	0	0	7
22:15	0	0	1	1	1	0	0	0	0	0	0	0	0	0	0	3
22:30	1	2	1	1	2	3	1	0	0	0	0	0	0	0	0	11
22:45	0	0	2	5	1	0	1	0	0	0	0	0	0	0	0	10
23:00	1	5	5	9	5	4	1	1	0	0	0	0	0	0	0	31
23:15	0	2	2	3	0	2	0	0	0	0	0	0	0	0	0	9
23:30	0	0	0	4	1	0	0	0	0	0	0	0	0	0	0	5
23:45	0	0	2	1	0	0	0	1	0	0	0	0	0	0	0	4
24:00	0	1	2	0	1	0	0	0	0	0	0	0	0	0	0	4
24:15	0	3	6	8	2	2	0	1	0	0	0	0	0	0	0	22
24:30	0	0	3	0	1	0	0	0	0	0	0	0	0	0	0	4
24:45	0	2	1	1	0	0	0	0	0	0	0	0	0	0	0	4
25:00	0	2	1	1	0	0	0	0	0	0	0	0	0	0	0	4
25:15	0	2	1	1	0	0	0	0	0	0	0	0	0	0	0	4
25:30	0	2	1	1	0	0	0	0	0	0	0	0	0	0	0	4
25:45	0	0	0	1	0	0	0	0	0	0	0	0	0	0	0	1
Total	0	4	5	3	1	0	0	0	0	0	0	0	0	0	0	13
Grand Total	28	122	248	349	281	117	27	7	0	0	0	0	0	0	0	1179

15th Percentile : 21 MPH
 50th Percentile : 28 MPH
 85th Percentile : 35 MPH
 95th Percentile : 39 MPH

Stats
 Mean Speed(Average) : 28 MPH
 10 MPH Pace Speed : 26-35 MPH
 Number in Pace : 630
 Percent in Pace : 53.40%
 Number of Vehicles > 25 MPH : 781
 Percent of Vehicles > 25 MPH : 66.20%

Southwest

Ira Avenue
 Btwn Loveland St & Lubec St

Site Code: 6603 Ira Avenue

Page 4

Start Time	15	16	21	26	31	36	41	46	51	56	61	66	71	76	999	Total
12:00 PM	2	0	0	5	3	0	0	0	0	0	0	0	0	0	0	10
12:15	0	2	4	4	0	1	0	0	0	0	0	0	0	0	0	11
12:30	3	2	1	7	2	1	0	0	0	0	0	0	0	0	0	16
12:45	2	2	0	0	0	0	0	0	0	0	0	0	0	0	0	4
13:00	7	6	5	16	5	2	0	0	0	0	0	0	0	0	0	41
13:15	2	1	4	4	2	0	0	0	0	0	0	0	0	0	0	13
13:30	0	4	3	3	1	1	0	0	0	0	0	0	0	0	0	12
13:45	1	0	4	3	4	0	0	0	0	0	0	0	0	0	0	12
14:00	1	0	1	4	5	1	1	0	0	0	0	0	0	0	0	13
14:15	4	5	12	14	12	2	1	0	0	0	0	0	0	0	0	50
14:30	0	0	2	3	4	2	0	0	0	0	0	0	0	0	0	11
14:45	0	1	3	7	5	1	0	0	0	0	0	0	0	0	0	17
15:00	5	6	12	9	4	3	1	1	0	0	0	0	0	0	0	41
15:15	1	4	3	7	7	3	0	0	0	0	0	0	0	0	0	25
15:30	6	11	20	26	20	9	1	1	0	0	0	0	0	0	0	94
15:45	1	8	19	15	4	3	0	0	0	0	0	0	0	0	0	50
16:00	2	5	7	4	10	0	0	0	0	0	0	0	0	0	0	28
16:15	2	2	5	8	12	2	2	0	0	0	0	0	0	0	0	33
16:30	3	0	0	6	7	4	0	0	0	0	0	0	0	0	0	20
16:45	8	15	31	33	33	9	2	0	0	0	0	0	0	0	0	131
17:00	0	1	3	17	11	1	1	0	0	0	0	0	0	0	0	34
17:15	2	8	3	3	3	2	1	0	0	0	0	0	0	0	0	22
17:30	3	1	5	10	4	4	0	0	0	0	0	0	0	0	0	27
17:45	2	1	4	7	3	3	0	0	0	0	0	0	0	0	0	20
18:00	7	11	15	37	21	10	2	0	0	0	0	0	0	0	0	103
18:15	0	1	5	8	4	0	1	0	0	0	0	0	0	0	0	19
18:30	1	1	1	6	9	5	0	0	0	0	0	0	0	0	0	23
18:45	0	4	5	6	4	1	0	0	0	0	0	0	0	0	0	20
19:00	3	4	9	9	7	0	0	0	0	0	0	0	0	0	0	32
19:15	4	10	20	29	24	6	1	0	0	0	0	0	0	0	0	94
19:30	2	1	6	5	7	3	0	0	0	0	0	0	0	0	0	24
19:45	0	1	7	5	0	1	0	0	0	0	0	0	0	0	0	14
20:00	0	1	2	6	1	3	0	0	0	0	0	0	0	0	0	13
20:15	0	2	4	6	4	0	1	0	0	0	0	0	0	0	0	17
20:30	2	5	19	22	12	7	1	0	0	0	0	0	0	0	0	68
20:45	1	2	5	5	5	0	0	0	0	0	0	0	0	0	0	18
21:00	0	0	3	5	2	1	0	0	0	0	0	0	0	0	0	11
21:15	0	1	3	1	1	1	0	0	0	0	0	0	0	0	0	7
21:30	0	1	0	3	1	1	0	0	0	0	0	0	0	0	0	6
21:45	1	4	11	14	9	3	0	0	0	0	0	0	0	0	0	42
22:00	0	3	7	5	2	0	0	0	0	0	0	0	0	0	0	17
22:15	0	0	3	2	1	0	0	0	0	0	0	0	0	0	0	6
22:30	0	2	5	2	2	0	0	0	0	0	0	0	0	0	0	11
22:45	2	1	8	4	0	2	0	0	0	0	0	0	0	0	0	17
23:00	2	6	23	13	5	2	0	0	0	0	0	0	0	0	0	51
23:15	0	0	1	3	2	0	0	0	0	0	0	0	0	0	0	6
23:30	1	2	0	0	1	0	0	0	0	0	0	0	0	0	0	4
23:45	0	0	0	2	2	0	0	0	0	0	0	0	0	0	0	4
24:00	0	0	1	1	2	1	0	0	0	0	0	0	0	0	0	6
24:15	1	2	2	6	7	1	1	0	0	0	0	0	0	0	0	20
24:30	2	1	0	3	1	0	0	0	0	0	0	0	0	0	0	7
24:45	0	0	2	3	1	0	0	0	0	0	0	0	0	0	0	6
25:00	0	0	1	2	0	0	0	0	0	0	0	0	0	0	0	3
25:15	0	0	3	1	1	0	0	0	0	0	0	0	0	0	0	5
25:30	2	1	6	9	3	0	0	0	0	0	0	0	0	0	0	21
25:45	1	0	1	0	1	0	1	0	0	0	0	0	0	0	0	4
26:00	0	0	0	0	1	0	0	0	0	0	0	0	0	0	0	1
26:15	0	0	1	0	0	0	0	0	0	0	0	0	0	0	0	1
26:30	0	0	0	1	0	0	1	0	0	0	0	0	0	0	0	2
26:45	1	0	2	1	2	0	2	0	0	0	0	0	0	0	0	8
Total	45	76	166	220	153	51	11	1	0	0	0	0	0	0	0	723
Grand Total	85	107	244	324	251	77	21	3	1	0	0	0	0	0	0	1113

15th Percentile : 19 MPH
 50th Percentile : 27 MPH
 85th Percentile : 34 MPH
 95th Percentile : 38 MPH

Stats
 Mean Speed(Average) : 27 MPH
 10 MPH Pace Speed : 26-35 MPH
 Number in Pace : 575
 Percent in Pace : 51.70%
 Number of Vehicles > 25 MPH : 677
 Percent of Vehicles > 25 MPH : 60.80%

Northeast, Southwest

Ira Avenue
 Btwn Loveland St & Lubec St

Site Code: 6603 Ira Avenue

Page 6

Start Time	15	16	21	26	31	36	41	46	51	56	61	66	71	76	999	Total
12:00 PM	2	0	2	6	7	1	0	0	0	0	0	0	0	0	0	18
12:15	1	5	10	9	0	2	0	0	0	0	0	0	0	0	0	27
12:30	3	2	3	13	8	2	0	0	0	0	0	0	0	0	0	31
12:45	2	6	3	2	2	0	0	0	0	0	0	0	0	0	0	15
13:00	8	13	18	30	17	5	0	0	0	0	0	0	0	0	0	91
13:15	3	4	6	7	8	1	0	0	0	0	0	0	0	0	0	29
13:30	0	6	7	7	5	2	0	0	0	0	0	0	0	0	0	27
13:45	1	0	10	5	9	1	0	0	0	0	0	0	0	0	0	26
14:00	1	2	8	9	9	1	1	0	0	0	0	0	0	0	0	31
14:15	5	12	31	28	31	5	1	0	0	0	0	0	0	0	0	113
14:30	1	1	7	9	7	2	0	0	0	0	0	0	0	0	0	27
14:45	0	2	9	16	11	3	0	0	0	0	0	0	0	0	0	41
15:00	6	8	24	19	11	5	1	1	0	0	0	0	0	0	0	75
15:15	1	4	5	14	17	6	0	0	0	0	0	0	0	0	0	47
15:30	8	15	45	58	46	16	1	1	0	0	0	0	0	0	0	190
15:45	5	12	26	26	10	3	0	0	0	0	0	0	0	0	0	82
16:00	6	9	12	13	12	0	0	0	0	0	0	0	0	0	0	52
16:15	6	7	10	13	16	6	2	0	0	0	0	0	0	0	0	60
16:30	4	0	3	12	16	9	0	0	0	0	0	0	0	0	0	44
16:45	21	28	51	64	54	18	2	0	0	0	0	0	0	0	0	238
17:00	0	1	9	27	16	2	2	0	0	0	0	0	0	0	0	57
17:15	2	13	8	10	7	5	2	0	0	0	0	0	0	0	0	47
17:30	4	1	11	15	10	5	0	0	0	0	0	0	0	0	0	46
17:45	2	3	10	14	9	4	2	0	0	0	0	0	0	0	0	44
18:00	8	18	38	66	42	16	6	0	0	0	0	0	0	0	0	194
18:15	0	3	9	13	8	4	3	0	0	0	0	0	0	0	0	40
18:30	1	3	3	8	15	8	0	0	0	0	0	0	0	0	0	38
18:45	0	6	7	8	6	4	0	0	0	0	0	0	0	0	0	31
19:00	3	7	11	11	9	5	0	0	0	0	0	0	0	0	0	46
19:15	4	19	30	40	38	21	3	0	0	0	0	0	0	0	0	155
19:30	2	3	11	11	14	6	1	0	0	0	0	0	0	0	0	48
19:45	0	4	8	8	9	7	2	0	0	0	0	0	0	0	0	38
20:00	0	5	6	15	3	3	0	1	0	0	0	0	0	0	0	33
20:15	0	3	11	13	10	0	1	0	0	0	0	0	0	0	0	38
20:30	2	15	36	47	36	16	4	1	0	0	0	0	0	0	0	157
20:45	1	4	6	15	7	1	0	0	0	0	0	0	0	0	0	34
21:00	0	0	6	7	2	1	1	0	0	0	0	0	0	0	0	17
21:15	0	1	8	6	4	2	0	0	0	0	0	0	0	0	0	21
21:30	0	2	2	10	4	2	0	0	0	0	0	0	0	0	0	20
21:45	1	7	22	38	17	6	1	0	0	0	0	0	0	0	0	92
22:00	0	3	9	9	4	2	0	1	0	0	0	0	0	0	0	28
22:15	0	4	6	9	7	4	0	0	0	0	0	0	0	0	0	30
22:30	1	4	9	5	3	2	0	0	0	0	0	0	0	0	0	24
22:45	2	4	10	6	1	2	1	0	0	0	0	0	0	0	0	26
23:00	3	15	34	29	15	10	1	1	0	0	0	0	0	0	0	108
23:15	0	3	2	5	3	0	0	0	0	0	0	0	0	0	0	13
23:30	1	2	1	1	2	0	0	0	0	0	0	0	0	0	0	7
23:45	1	2	1	3	4	3	1	0	0	0	0	0	0	0	0	15
24:00	0	0	3	6	3	2	1	1	0	0	0	0	0	0	0	16
24:15	2	7	7	15	12	5	2	1	0	0	0	0	0	0	0	51
24:30	2	3	2	6	1	2	0	0	0	0	0	0	0	0	0	16
24:45	0	0	2	7	2	0	0	0	0	0	0	0	0	0	0	11
25:00	0	0	3	3	0	0	0	1	0	0	0	0	0	0	0	7
25:15	0	1	5	1	2	0	0	0	0	0	0	0	0	0	0	9
25:30	2	4	12	17	5	2	0	1	0	0	0	0	0	0	0	43
25:45	1	0	4	0	2	0	1	0	0	0	0	0	0	0	0	8
26:00	0	2	1	1	1	0	0	0	0	0	0	0	0	0	0	5
26:15	0	2	2	1	0	0	0	0	0	0	0	0	0	0	0	5
26:30	0	0	0	2	0	0	1	0	0	0	0	0	0	0	0	3
26:45	1	4	7	4	3	0	2	0	0	0	0	0	0	0	0	21
Total	65	157	331	436	316	120	23	5	0	0	0	0	0	0	0	1453
Grand Total	113	229	492	673	532	194	48	10	1	0	0	0	0	0	0	2292

15th Percentile : 21 MPH
 50th Percentile : 28 MPH
 85th Percentile : 35 MPH
 95th Percentile : 39 MPH

Stats
 Mean Speed(Average) : 27 MPH
 10 MPH Pace Speed : 26-35 MPH
 Number in Pace : 1205
 Percent in Pace : 52.60%
 Number of Vehicles > 25 MPH : 1458
 Percent of Vehicles > 25 MPH : 63.60%

Ira Avenue
Btwn Loveland St & Lubec St

Site Code: 6603 Ira Avenue

Page 1

Start Time	19-May-22 Thu	Northeast		Hour Totals		Southwest		Hour Totals		Combined Totals	
		Morning	Afternoon	Morning	Afternoon	Morning	Afternoon	Morning	Afternoon	Morning	Afternoon
12:00		3	8			2	10				
12:15		3	16			2	11				
12:30		2	15			2	16				
12:45		1	11	9	50	2	4	8	41	17	91
1:00		0	16			0	13				
1:15		1	15			1	12				
1:30		2	14			1	12				
1:45		1	18	4	63	2	13	4	50	8	113
2:00		3	16			1	11				
2:15		1	24			0	17				
2:30		0	34			0	41				
2:45		2	22	6	96	0	25	1	94	7	190
3:00		0	32			0	50				
3:15		1	24			2	28				
3:30		2	27			5	33				
3:45		0	24	3	107	1	20	8	131	11	238
4:00		1	23			0	34				
4:15		2	25			1	22				
4:30		2	19			0	27				
4:45		7	24	12	91	4	20	5	103	17	194
5:00		4	21			3	19				
5:15		2	15			5	23				
5:30		7	11			4	20				
5:45		9	14	22	61	4	32	16	94	38	155
6:00		9	24			6	24				
6:15		8	24			6	14				
6:30		17	20			13	13				
6:45		10	21	44	89	3	17	28	68	72	157
7:00		15	16			7	18				
7:15		21	6			15	11				
7:30		31	14			20	7				
7:45		42	14	109	50	48	6	90	42	199	92
8:00		38	11			32	17				
8:15		24	24			34	6				
8:30		14	13			16	11				
8:45		19	9	95	57	10	17	92	51	187	108
9:00		11	7			14	6				
9:15		14	3			8	4				
9:30		7	11			18	4				
9:45		16	10	48	31	10	6	50	20	98	51
10:00		11	9			16	7				
10:15		15	5			8	6				
10:30		15	4			13	3				
10:45		9	4	50	22	10	5	47	21	97	43
11:00		11	4			5	4				
11:15		9	4			15	1				
11:30		15	4			10	1				
11:45		12	1	47	13	11	2	41	8	88	21
Total		449	730			390	723			839	1453
Percent		38.10%	61.90%			35.00%	65.00%			36.60%	63.40%
Grand Total		449	730			390	723			839	1453
Percent		38.10%	61.90%			35.00%	65.00%			36.60%	63.40%

Northeast

Ira Avenue
 Btwn Loveland St & Lubec St

Site Code: 6603 Ira Avenue

Page 2

Start Time	15	16	21	26	31	36	41	46	51	56	61	66	71	76	999	Total
12:00 PM	0	0	2	5	6	0	1	0	0	0	0	0	0	0	0	14
12:15	0	2	7	9	4	0	0	0	0	0	0	0	0	0	0	22
12:30	0	3	11	10	1	2	0	0	0	0	0	0	0	0	0	27
12:45	0	1	5	5	5	1	0	0	0	0	0	0	0	0	0	17
13:00	0	6	25	29	16	3	1	0	0	0	0	0	0	0	0	80
13:15	1	4	5	5	5	0	0	0	0	0	0	0	0	0	0	21
13:30	0	2	4	1	3	0	0	0	0	0	0	0	0	0	0	20
13:45	0	4	3	7	4	1	1	0	0	0	0	0	0	0	0	10
14:00	1	12	15	22	17	2	1	1	0	0	0	0	0	0	0	20
14:15	1	3	8	7	3	0	1	1	0	0	0	0	0	0	0	24
14:30	0	2	9	17	7	0	1	0	0	0	0	0	0	0	0	36
14:45	1	0	8	5	5	0	1	0	0	0	0	0	0	0	0	20
15:00	3	6	32	35	15	1	4	1	0	0	0	0	0	0	0	17
15:15	3	2	5	6	7	2	0	0	0	0	0	0	0	0	0	97
15:30	5	5	8	6	4	2	0	0	0	0	0	0	0	0	0	25
15:45	2	6	6	7	2	0	0	0	0	0	0	0	0	0	0	30
16:00	2	4	6	5	4	0	0	0	0	0	0	0	0	0	0	23
16:15	12	17	25	24	17	4	0	0	0	0	0	0	0	0	0	21
16:30	1	5	10	10	3	0	0	0	0	0	0	0	0	0	0	99
16:45	0	6	7	5	0	2	0	0	0	0	0	0	0	0	0	29
17:00	0	3	4	11	5	2	0	0	0	0	0	0	0	0	0	20
17:15	0	1	0	3	9	3	2	0	0	0	0	0	0	0	0	25
17:30	1	15	21	29	17	7	2	0	0	0	0	0	0	0	0	18
17:45	2	2	7	8	1	3	0	0	0	0	0	0	0	0	0	92
18:00	0	2	6	10	8	2	0	0	0	0	0	0	0	0	0	23
18:15	0	4	1	4	5	4	0	0	0	0	0	0	0	0	0	28
18:30	3	7	11	8	1	0	0	0	0	0	0	0	0	0	0	18
18:45	5	15	25	30	15	9	0	0	0	0	0	0	0	0	0	30
19:00	0	3	5	5	2	0	0	0	0	0	0	0	0	0	0	99
19:15	0	4	4	7	11	0	1	0	0	0	0	0	0	0	0	15
19:30	0	3	3	3	3	1	0	0	0	0	0	0	0	0	0	27
19:45	1	7	1	3	4	3	0	0	0	0	0	0	0	0	0	13
20:00	1	17	13	18	20	4	1	0	0	0	0	0	0	0	0	19
20:15	1	3	4	5	3	1	0	0	0	0	0	0	0	0	0	74
20:30	0	3	3	6	5	0	0	0	0	0	0	0	0	0	0	17
20:45	1	2	3	6	3	3	0	0	0	0	0	0	0	0	0	17
21:00	0	7	7	4	1	1	1	0	0	0	0	0	0	0	0	18
21:15	2	15	17	21	12	5	1	0	0	0	0	0	0	0	0	21
21:30	2	7	7	4	0	0	0	0	0	0	0	0	0	0	0	73
21:45	0	0	7	5	1	1	0	0	0	0	0	0	0	0	0	20
22:00	0	2	5	2	0	0	0	0	0	0	0	0	0	0	0	12
22:15	0	0	7	5	1	1	0	0	0	0	0	0	0	0	0	9
22:30	2	14	24	13	1	1	0	0	0	0	0	0	0	0	0	14
22:45	2	3	3	2	3	3	1	0	0	0	0	0	0	0	0	55
23:00	0	1	0	3	3	1	1	0	0	0	0	0	0	0	0	17
23:15	0	1	2	4	2	2	0	0	0	0	0	0	0	0	0	9
23:30	0	4	3	2	3	0	0	0	0	0	0	0	0	0	0	11
23:45	2	9	8	11	11	6	2	0	0	0	0	0	0	0	0	12
24:00	0	3	2	5	2	1	1	0	0	0	0	0	0	0	0	49
24:15	1	1	0	1	3	0	0	0	0	0	0	0	0	0	0	14
24:30	0	5	2	1	2	0	0	0	0	0	0	0	0	0	0	6
24:45	0	0	3	1	2	2	0	0	0	0	0	0	0	0	0	10
25:00	1	9	7	8	9	3	1	0	0	0	0	0	0	0	0	8
25:15	0	3	3	2	2	1	0	0	0	0	0	0	0	0	0	38
25:30	0	0	1	1	0	0	0	0	0	0	0	0	0	0	0	11
25:45	0	1	1	2	2	2	1	0	0	0	0	0	0	0	0	2
26:00	0	2	3	2	0	1	0	0	0	0	0	0	0	0	0	9
26:15	0	6	8	7	4	4	1	0	0	0	0	0	0	0	0	8
26:30	0	6	8	7	4	4	1	0	0	0	0	0	0	0	0	30
Total	30	141	220	247	154	49	14	2	0	0	0	0	0	0	0	857
Grand Total	37	172	314	403	241	85	21	4	0	0	0	0	0	0	0	1277

15th Percentile : 20 MPH
 50th Percentile : 27 MPH
 85th Percentile : 34 MPH
 95th Percentile : 38 MPH

Stats
 Mean Speed(Average) : 27 MPH
 10 MPH Pace Speed : 21-30 MPH
 Number in Pace : 717
 Percent in Pace : 56.10%
 Number of Vehicles > 25 MPH : 754
 Percent of Vehicles > 25 MPH : 59.00%

Southwest

Ira Avenue
 Btwn Loveland St & Lubec St

Site Code: 6603 Ira Avenue

Page 4

Start Time	15	16	21	26	31	36	41	46	51	56	61	66	71	76	999	Total
12:00 PM	0	0	3	6	3	2	1	0	0	0	0	0	0	0	0	15
12:15	1	0	2	11	3	1	0	0	0	0	0	0	0	0	0	18
12:30	1	3	6	17	7	3	1	0	0	0	0	0	0	0	0	38
12:45	0	3	2	8	4	0	1	0	0	0	0	0	0	0	0	18
13:00	2	6	13	42	17	6	3	0	0	0	0	0	0	0	0	89
13:15	0	3	5	8	8	0	0	1	0	0	0	0	0	0	0	25
13:30	1	0	2	6	3	1	0	0	0	0	0	0	0	0	0	13
13:45	0	1	2	2	2	2	0	0	0	0	0	0	0	0	0	9
14:00	1	0	2	1	5	2	0	0	0	0	0	0	0	0	0	11
14:15	2	4	11	17	18	5	0	1	0	0	0	0	0	0	0	58
14:30	0	2	0	9	3	1	1	0	0	0	0	0	0	0	0	16
14:45	0	1	3	10	5	1	1	0	0	0	0	0	0	0	0	21
15:00	1	3	9	11	5	2	1	0	0	0	0	0	0	0	0	32
15:15	1	7	12	8	6	3	0	0	0	0	0	0	0	0	0	37
15:30	2	13	24	38	19	7	3	0	0	0	0	0	0	0	0	106
15:45	0	3	8	2	2	2	0	0	0	0	0	0	0	0	0	17
16:00	2	6	6	7	7	0	0	0	0	0	0	0	0	0	0	28
16:15	1	2	10	7	8	1	0	1	0	0	0	0	0	0	0	30
16:30	2	3	3	5	5	1	0	1	0	0	0	0	0	0	0	20
16:45	5	14	27	21	22	4	0	2	0	0	0	0	0	0	0	95
17:00	0	5	6	7	3	0	0	0	0	0	0	0	0	0	0	21
17:15	2	1	5	7	4	2	0	0	0	0	0	0	0	0	0	21
17:30	0	5	7	5	2	1	2	0	0	0	0	0	0	0	0	22
17:45	0	4	4	7	1	0	1	0	0	0	0	0	0	0	0	17
18:00	2	15	22	26	10	3	3	0	0	0	0	0	0	0	0	81
18:15	0	3	1	3	7	2	1	0	0	0	0	0	0	0	0	17
18:30	2	5	0	5	3	1	0	0	0	0	0	0	0	0	0	16
18:45	0	5	2	2	4	2	0	0	0	0	0	0	0	0	0	15
19:00	1	4	7	7	5	1	2	0	0	0	0	0	0	0	0	27
19:15	3	17	10	17	19	6	3	0	0	0	0	0	0	0	0	75
19:30	0	5	3	7	0	5	3	0	0	0	0	0	0	0	0	23
19:45	0	5	5	5	5	1	0	0	0	0	0	0	0	0	0	21
20:00	0	3	4	8	3	2	0	0	1	0	0	0	0	0	0	21
20:15	0	8	4	4	5	3	0	0	0	0	0	0	0	0	0	24
20:30	0	21	16	24	13	11	3	0	1	0	0	0	0	0	0	89
20:45	0	4	1	7	1	1	0	0	0	0	0	0	0	0	0	14
21:00	0	3	1	6	7	0	1	0	0	0	0	0	0	0	0	18
21:15	1	4	3	2	2	0	0	0	0	0	0	0	0	0	0	12
21:30	0	2	2	1	2	0	1	0	0	0	0	0	0	0	0	8
21:45	1	13	7	16	12	1	2	0	0	0	0	0	0	0	0	52
22:00	0	6	0	8	1	0	0	0	0	0	0	0	0	0	0	15
22:15	0	2	4	2	2	1	0	0	0	0	0	0	0	0	0	11
22:30	0	1	0	4	0	1	0	0	0	0	0	0	0	0	0	6
22:45	0	1	5	3	1	0	0	0	0	0	0	0	0	0	0	10
23:00	0	10	9	17	4	2	0	0	0	0	0	0	0	0	0	42
23:15	0	1	1	4	3	0	0	0	0	0	0	0	0	0	0	9
23:30	0	2	3	0	1	0	0	0	0	0	0	0	0	0	0	6
23:45	0	6	5	4	1	1	0	0	0	0	0	0	0	0	0	17
24:00	0	3	1	0	3	2	1	0	0	0	0	0	0	0	0	10
24:15	0	12	10	8	8	3	1	0	0	0	0	0	0	0	0	42
24:30	0	1	4	2	2	0	0	0	0	0	0	0	0	0	0	9
24:45	0	0	2	1	1	1	0	0	0	0	0	0	0	0	0	5
25:00	0	2	5	4	0	0	0	0	0	0	0	0	0	0	0	11
25:15	1	4	0	0	0	1	0	0	0	0	0	0	0	0	0	6
25:30	1	7	11	7	3	2	0	0	0	0	0	0	0	0	0	31
25:45	1	0	2	0	0	1	0	0	0	0	0	0	0	0	0	4
26:00	0	2	0	6	2	0	0	0	0	0	0	0	0	0	0	10
26:15	0	0	3	0	1	1	0	0	1	0	0	0	0	0	0	6
26:30	0	1	4	2	0	0	0	0	0	0	0	0	0	0	0	7
26:45	1	3	9	8	3	2	0	0	1	0	0	0	0	0	0	27
Total	19	135	169	241	148	52	18	3	2	0	0	0	0	0	0	787
Grand Total	25	177	268	356	219	74	23	4	2	0	0	0	0	0	0	1148

15th Percentile : 20 MPH
 50th Percentile : 27 MPH
 85th Percentile : 34 MPH
 95th Percentile : 39 MPH

Stats
 Mean Speed(Average) : 27 MPH
 10 MPH Pace Speed : 21-30 MPH
 Number in Pace : 624
 Percent in Pace : 54.40%
 Number of Vehicles > 25 MPH : 678
 Percent of Vehicles > 25 MPH : 59.10%

Northeast, Southwest

Ira Avenue
Btwn Loveland St & Lubec St

Site Code: 6603 Ira Avenue

Page 5

Start Time	15	20	25	30	35	40	45	50	55	60	65	70	75	999	Total
5/20/2022	0	1	3	1	1	0	0	0	0	0	0	0	0	0	6
0:15	0	0	2	0	0	1	0	0	0	0	0	0	0	0	3
0:30	1	0	0	1	1	2	0	0	0	0	0	0	0	0	5
0:45	0	0	0	1	2	0	0	0	0	0	0	0	0	0	3
1:00	1	1	5	3	4	3	0	0	0	0	0	0	0	0	17
1:15	0	0	0	0	0	0	0	0	0	0	0	0	0	0	0
1:30	0	0	2	1	1	0	0	0	0	0	0	0	0	0	4
1:45	0	0	1	1	0	1	0	0	0	0	0	0	0	0	3
2:00	0	0	0	0	0	0	0	0	0	0	0	0	0	0	0
2:15	0	1	1	1	0	0	0	0	0	0	0	0	0	0	3
2:30	0	0	0	0	0	0	0	0	0	0	0	0	0	0	0
2:45	0	0	1	0	0	0	0	0	0	0	0	0	0	0	1
3:00	0	1	2	2	0	0	0	0	0	0	0	0	0	0	5
3:15	0	0	0	0	0	0	0	0	0	0	0	0	0	0	0
3:30	1	0	0	0	1	0	0	0	0	0	0	0	0	0	2
3:45	0	0	0	0	1	0	0	0	0	0	0	0	0	0	1
4:00	1	0	0	0	0	0	0	0	0	0	0	0	0	0	1
4:15	2	0	0	0	2	0	0	0	0	0	0	0	0	0	4
4:30	0	1	0	1	0	0	0	0	0	0	0	0	0	0	2
4:45	0	0	0	3	1	0	2	0	0	0	0	0	0	0	6
5:00	0	0	0	3	0	0	0	0	0	0	0	0	0	0	3
5:15	0	1	0	2	1	3	0	0	0	0	0	0	0	0	7
5:30	0	2	0	9	2	3	2	0	0	0	0	0	0	0	18
5:45	0	1	1	1	0	0	0	0	0	0	0	0	0	0	3
6:00	0	1	2	2	0	0	2	0	0	0	0	0	0	0	7
6:15	0	1	2	3	4	0	1	0	0	0	0	0	0	0	11
6:30	0	1	6	3	4	2	0	0	0	0	0	0	0	0	16
6:45	0	4	11	9	8	2	3	0	0	0	0	0	0	0	37
7:00	0	0	1	4	3	0	1	0	0	0	0	0	0	0	9
7:15	0	0	4	7	3	2	1	1	0	0	0	0	0	0	18
7:30	0	1	2	6	4	4	0	1	0	0	0	0	0	0	18
7:45	0	2	2	8	2	4	0	0	0	0	0	0	0	0	18
8:00	0	3	9	25	12	10	2	2	0	0	0	0	0	0	63
8:15	1	1	8	15	2	1	0	0	0	0	0	0	0	0	28
8:30	1	3	11	9	8	1	0	0	0	0	0	0	0	0	33
8:45	0	4	9	24	12	4	0	1	0	0	0	0	0	0	54
9:00	0	7	19	14	17	7	1	0	0	0	0	0	0	0	65
9:15	2	15	47	62	39	13	1	1	0	0	0	0	0	0	180
9:30	0	7	16	13	13	3	0	0	0	0	0	0	0	0	52
9:45	0	4	7	13	7	3	0	0	0	0	0	0	0	0	34
10:00	2	4	4	15	7	4	1	0	0	0	0	0	0	0	37
10:15	2	0	7	7	6	0	0	0	0	0	0	0	0	0	22
10:30	4	15	34	48	33	10	1	0	0	0	0	0	0	0	145
10:45	0	3	5	7	4	1	0	0	0	0	0	0	0	0	20
11:00	1	0	7	13	7	1	0	0	0	0	0	0	0	0	29
11:15	0	5	14	11	1	1	0	0	0	0	0	0	0	0	32
11:30	0	6	5	8	2	0	0	0	0	0	0	0	0	0	21
11:45	1	14	31	39	14	3	0	0	0	0	0	0	0	0	102
12:00	1	2	6	5	6	3	1	0	0	0	0	0	0	0	24
12:15	0	3	6	8	3	1	0	0	0	0	0	0	0	0	21
12:30	0	2	3	11	5	2	0	0	0	0	0	0	0	0	23
12:45	1	2	10	12	2	0	2	0	0	0	0	0	0	0	29
1:00	2	9	25	36	16	6	3	0	0	0	0	0	0	0	97
1:15	1	1	8	9	6	1	0	0	0	0	0	0	0	0	26
1:30	0	5	5	7	6	2	0	0	0	0	0	0	0	0	25
1:45	0	3	8	6	6	3	0	0	0	0	0	0	0	0	26
2:00	0	0	5	14	9	1	0	0	0	0	0	0	0	0	29
Total	13	73	193	271	158	58	12	3	0	0	0	0	0	0	781

Northeast, Southwest

Ira Avenue
 Btwn Loveland St & Lubec St

Site Code: 6603 Ira Avenue

Page 6

Start Time	15	16	20	21	25	26	30	31	35	36	40	41	45	46	50	51	55	56	60	61	65	66	70	71	75	76	999	Total
12:00 PM	0	0	5	11	9	2	2	0	0	0	0	0	0	0	0	0	0	0	0	0	0	0	0	0	0	0	29	
12:15	1	2	9	20	7	1	0	0	0	0	0	0	0	0	0	0	0	0	0	0	0	0	0	0	0	0	40	
12:30	1	6	17	27	8	5	1	0	0	0	0	0	0	0	0	0	0	0	0	0	0	0	0	0	0	0	65	
12:45	0	4	7	13	9	1	1	0	0	0	0	0	0	0	0	0	0	0	0	0	0	0	0	0	0	0	35	
13:00	2	12	38	71	33	9	4	0	0	0	0	0	0	0	0	0	0	0	0	0	0	0	0	0	0	0	169	
13:15	0	5	8	17	13	1	0	2	0	0	0	0	0	0	0	0	0	0	0	0	0	0	0	0	0	0	46	
13:30	2	4	7	11	8	1	0	0	0	0	0	0	0	0	0	0	0	0	0	0	0	0	0	0	0	0	33	
13:45	0	3	6	3	5	2	0	0	0	0	0	0	0	0	0	0	0	0	0	0	0	0	0	0	0	0	19	
14:00	1	4	5	8	9	3	1	0	0	0	0	0	0	0	0	0	0	0	0	0	0	0	0	0	0	0	31	
14:15	3	16	26	39	35	7	1	2	0	0	0	0	0	0	0	0	0	0	0	0	0	0	0	0	0	0	129	
14:30	1	5	8	16	6	1	2	1	0	0	0	0	0	0	0	0	0	0	0	0	0	0	0	0	0	0	40	
14:45	0	3	12	27	12	1	2	0	0	0	0	0	0	0	0	0	0	0	0	0	0	0	0	0	0	0	57	
15:00	2	3	17	16	10	2	2	0	0	0	0	0	0	0	0	0	0	0	0	0	0	0	0	0	0	0	52	
15:15	2	8	19	14	6	4	1	0	0	0	0	0	0	0	0	0	0	0	0	0	0	0	0	0	0	0	54	
15:30	5	19	56	73	34	8	7	1	0	0	0	0	0	0	0	0	0	0	0	0	0	0	0	0	0	0	203	
15:45	3	5	13	8	9	4	0	0	0	0	0	0	0	0	0	0	0	0	0	0	0	0	0	0	0	0	42	
16:00	7	11	14	13	11	2	0	0	0	0	0	0	0	0	0	0	0	0	0	0	0	0	0	0	0	0	58	
16:15	3	8	16	14	10	1	0	1	0	0	0	0	0	0	0	0	0	0	0	0	0	0	0	0	0	0	53	
16:30	4	7	9	10	9	1	0	1	0	0	0	0	0	0	0	0	0	0	0	0	0	0	0	0	0	0	41	
16:45	17	31	52	45	39	8	0	2	0	0	0	0	0	0	0	0	0	0	0	0	0	0	0	0	0	0	194	
17:00	1	10	16	17	6	0	0	0	0	0	0	0	0	0	0	0	0	0	0	0	0	0	0	0	0	0	50	
17:15	2	7	12	12	4	4	0	0	0	0	0	0	0	0	0	0	0	0	0	0	0	0	0	0	0	0	41	
17:30	0	8	11	16	7	3	2	0	0	0	0	0	0	0	0	0	0	0	0	0	0	0	0	0	0	0	47	
17:45	0	5	4	10	10	3	3	0	0	0	0	0	0	0	0	0	0	0	0	0	0	0	0	0	0	0	35	
18:00	3	30	43	55	27	10	5	0	0	0	0	0	0	0	0	0	0	0	0	0	0	0	0	0	0	0	173	
18:15	2	5	8	11	8	5	1	0	0	0	0	0	0	0	0	0	0	0	0	0	0	0	0	0	0	0	40	
18:30	2	7	6	15	11	3	0	0	0	0	0	0	0	0	0	0	0	0	0	0	0	0	0	0	0	0	44	
18:45	0	9	3	6	9	6	0	0	0	0	0	0	0	0	0	0	0	0	0	0	0	0	0	0	0	0	33	
19:00	4	11	18	15	6	1	2	0	0	0	0	0	0	0	0	0	0	0	0	0	0	0	0	0	0	0	57	
19:15	8	32	35	47	34	15	3	0	0	0	0	0	0	0	0	0	0	0	0	0	0	0	0	0	0	0	174	
19:30	0	8	8	12	2	5	3	0	0	0	0	0	0	0	0	0	0	0	0	0	0	0	0	0	0	0	38	
19:45	0	9	9	12	16	1	1	0	0	0	0	0	0	0	0	0	0	0	0	0	0	0	0	0	0	0	48	
20:00	0	6	7	11	6	3	0	0	1	0	0	0	0	0	0	0	0	0	0	0	0	0	0	0	0	0	34	
20:15	1	15	5	7	9	6	0	0	0	0	0	0	0	0	0	0	0	0	0	0	0	0	0	0	0	0	43	
20:30	1	38	29	42	33	15	4	0	1	0	0	0	0	0	0	0	0	0	0	0	0	0	0	0	0	0	163	
20:45	1	7	5	12	4	2	0	0	0	0	0	0	0	0	0	0	0	0	0	0	0	0	0	0	0	0	31	
21:00	0	6	4	12	12	0	1	0	0	0	0	0	0	0	0	0	0	0	0	0	0	0	0	0	0	0	35	
21:15	2	6	6	8	5	3	0	0	0	0	0	0	0	0	0	0	0	0	0	0	0	0	0	0	0	0	30	
21:30	0	9	9	5	3	1	2	0	0	0	0	0	0	0	0	0	0	0	0	0	0	0	0	0	0	0	29	
21:45	3	28	24	37	24	6	3	0	0	0	0	0	0	0	0	0	0	0	0	0	0	0	0	0	0	0	125	
22:00	2	13	7	12	1	0	0	0	0	0	0	0	0	0	0	0	0	0	0	0	0	0	0	0	0	0	35	
22:15	0	7	9	4	2	1	0	0	0	0	0	0	0	0	0	0	0	0	0	0	0	0	0	0	0	0	23	
22:30	0	3	5	6	0	1	0	0	0	0	0	0	0	0	0	0	0	0	0	0	0	0	0	0	0	0	15	
22:45	0	1	12	8	2	1	0	0	0	0	0	0	0	0	0	0	0	0	0	0	0	0	0	0	0	0	24	
23:00	2	24	33	30	5	3	0	0	0	0	0	0	0	0	0	0	0	0	0	0	0	0	0	0	0	0	97	
23:15	2	4	4	6	6	3	1	0	0	0	0	0	0	0	0	0	0	0	0	0	0	0	0	0	0	0	26	
23:30	0	3	3	3	4	1	1	0	0	0	0	0	0	0	0	0	0	0	0	0	0	0	0	0	0	0	15	
23:45	0	7	7	8	3	3	0	0	0	0	0	0	0	0	0	0	0	0	0	0	0	0	0	0	0	0	28	
23:59	0	7	4	2	6	2	1	0	0	0	0	0	0	0	0	0	0	0	0	0	0	0	0	0	0	0	22	
24:00	2	21	18	19	19	9	3	0	0	0	0	0	0	0	0	0	0	0	0	0	0	0	0	0	0	0	91	
24:15	0	4	6	7	4	1	1	0	0	0	0	0	0	0	0	0	0	0	0	0	0	0	0	0	0	0	23	
24:30	1	1	2	2	4	1	0	0	0	0	0	0	0	0	0	0	0	0	0	0	0	0	0	0	0	0	11	
24:45	0	7	7	5	2	0	0	0	0	0	0	0	0	0	0	0	0	0	0	0	0	0	0	0	0	0	21	
24:59	1	4	3	1	2	3	0	0	0	0	0	0	0	0	0	0	0	0	0	0	0	0	0	0	0	0	14	
25:00	2	16	18	15	12	5	1	0	0	0	0	0	0	0	0	0	0	0	0	0	0	0	0	0	0	0	69	
25:15	1	3	5	2	2	2	0	0	0	0	0	0	0	0	0	0	0	0	0	0	0	0	0	0	0	0	15	
25:30	0	2	1	7	2	0	0	0	0	0	0	0	0	0	0	0	0	0	0	0	0	0	0	0	0	0	12	
25:45	0	1	4	2	3	3	1	0	1	0	1	0	0	0	0	0	0	0	0	0	0	0	0	0	0	0	15	
25:59	0	3	7	4	0	1	0	0	0	0	0	0	0	0	0	0	0	0	0	0	0	0	0	0	0	0	15	
Total	1	9	17	15	7	6	1	0	1	0	1	0	1	0	0	0	0	0	0	0	0	0	0	0	0	0	57	
Grand Total	49	276	389	488	302	101	32	5	2	0	0	0	0	0	0	0	0	0	0	0	0	0	0	0	0	0	1644	
Grand Total	62	349	582	759	460	159	44	8	2	0	0	0	0	0	0	0	0	0	0	0	0	0	0	0	0	0	2425	

15th Percentile : 20 MPH
 50th Percentile : 27 MPH
 85th Percentile : 34 MPH
 95th Percentile : 38 MPH

Stats
 Mean Speed(Average) : 27 MPH
 10 MPH Pace Speed : 21-30 MPH
 Number in Pace : 1341
 Percent in Pace : 55.30%
 Number of Vehicles > 25 MPH : 1432
 Percent of Vehicles > 25 MPH : 59.10%

Ira Avenue
Btwn Loveland St & Lubec St

Site Code: 6603 Ira Avenue

Page 1

Start Time	20-May-22 Fri	Northeast		Hour Totals		Southwest		Hour Totals		Combined Totals	
		Morning	Afternoon	Morning	Afternoon	Morning	Afternoon	Morning	Afternoon	Morning	Afternoon
12:00		2	14			4	15				
12:15		1	22			2	18				
12:30		2	27			3	38				
12:45		2	17	7	80	1	18	10	89	17	169
1:00		0	21			0	25				
1:15		1	20			3	13				
1:30		1	10			2	9				
1:45		0	20	2	71	0	11	5	58	7	129
2:00		0	24			1	16				
2:15		3	36			0	21				
2:30		0	20			0	32				
2:45		0	17	3	97	1	37	2	106	5	203
3:00		0	25			0	17				
3:15		0	30			2	28				
3:30		0	23			1	30				
3:45		1	21	1	99	0	20	3	95	4	194
4:00		1	29			1	21				
4:15		5	20			1	21				
4:30		0	25			3	22				
4:45		5	18	11	92	2	17	7	81	18	173
5:00		0	23			3	17				
5:15		3	28			4	16				
5:30		7	18			4	15				
5:45		8	30	18	99	8	27	19	75	37	174
6:00		5	15			4	23				
6:15		11	27			7	21				
6:30		10	13			8	21				
6:45		13	19	39	74	5	24	24	89	63	163
7:00		15	17			13	14				
7:15		19	17			14	18				
7:30		31	18			23	12				
7:45		32	21	97	73	33	8	83	52	180	125
8:00		24	20			28	15				
8:15		18	12			16	11				
8:30		18	9			19	6				
8:45		15	14	75	55	7	10	70	42	145	97
9:00		9	17			11	9				
9:15		11	9			18	6				
9:30		17	11			15	17				
9:45		8	12	45	49	13	10	57	42	102	91
10:00		13	14			11	9				
10:15		15	6			6	5				
10:30		15	10			8	11				
10:45		17	8	60	38	12	6	37	31	97	69
11:00		17	11			9	4				
11:15		13	2			12	10				
11:30		15	9			11	6				
11:45		17	8	62	30	12	7	44	27	106	57
Total		420	857			361	787			781	1644
Percent		32.90%	67.10%			31.40%	68.60%			32.20%	67.80%
Grand Total		420	857			361	787			781	1644
Percent		32.90%	67.10%			31.40%	68.60%			32.20%	67.80%

Northeast

Ira Avenue
Btwn Loveland St & Lubec St

Site Code: 6603 Ira Avenue

Page 1

Start Time	15	20	25	30	35	40	45	50	55	60	65	70	75	999	Total
5/21/2022	0	1	0	1	0	0	0	0	0	0	0	0	0	0	2
0:15	0	2	1	3	0	1	0	0	0	0	0	0	0	0	7
0:30	0	0	2	1	2	0	0	0	0	0	0	0	0	0	5
0:45	0	3	0	2	0	1	0	0	0	0	0	0	0	0	6
1:00	0	6	3	7	2	2	0	0	0	0	0	0	0	0	20
1:15	0	0	0	0	1	1	0	0	0	0	0	0	0	0	2
1:30	0	2	1	0	0	0	0	0	0	0	0	0	0	0	3
1:45	0	0	0	1	0	0	0	0	0	0	0	0	0	0	1
2:00	0	2	1	1	0	0	0	0	0	0	0	0	0	0	4
2:15	1	0	0	1	0	0	0	0	0	0	0	0	0	0	2
2:30	0	0	1	0	1	0	0	0	0	0	0	0	0	0	2
2:45	0	0	0	0	0	0	0	0	0	0	0	0	0	0	0
3:00	1	2	2	2	1	0	0	0	0	0	0	0	0	0	8
3:15	0	1	0	1	0	0	0	0	0	0	0	0	0	0	2
3:30	0	1	0	1	0	0	0	0	0	0	0	0	0	0	2
3:45	0	0	0	0	0	0	0	0	0	0	0	0	0	0	0
4:00	0	3	0	2	0	0	0	0	0	0	0	0	0	0	5
4:15	0	0	0	1	1	0	0	0	0	0	0	0	0	0	2
4:30	0	1	0	0	0	0	0	0	0	0	0	0	0	0	1
4:45	0	0	0	2	2	0	0	0	0	0	0	0	0	0	4
5:00	1	0	0	1	0	1	0	0	0	0	0	0	0	0	3
5:15	1	1	0	4	3	1	0	0	0	0	0	0	0	0	10
5:30	0	0	1	0	0	0	0	0	0	0	0	0	0	0	1
5:45	0	2	0	1	1	0	0	0	0	0	0	0	0	0	4
6:00	0	0	0	1	1	0	0	0	0	0	0	0	0	0	2
6:15	0	2	1	3	2	0	0	0	0	0	0	0	0	0	8
6:30	0	0	0	0	1	0	0	0	0	0	0	0	0	0	1
6:45	0	0	0	0	1	0	0	0	0	0	0	0	0	0	1
7:00	0	0	1	1	0	2	0	0	0	0	0	0	0	0	4
7:15	0	1	2	2	2	2	0	0	0	0	0	0	0	0	9
7:30	0	1	3	3	4	4	0	0	0	0	0	0	0	0	15
7:45	0	2	2	2	0	0	1	0	0	0	0	0	0	0	7
8:00	1	9	9	6	5	0	0	1	0	0	0	0	0	0	31
8:15	1	0	2	1	2	0	0	0	0	0	0	0	0	0	6
8:30	0	1	1	0	1	0	0	0	0	0	0	0	0	0	3
8:45	0	2	0	4	3	1	0	0	0	0	0	0	0	0	10
9:00	0	2	2	2	2	1	0	1	0	0	0	0	0	0	10
9:15	1	5	5	7	8	2	0	1	0	0	0	0	0	0	29
9:30	0	0	5	2	2	0	0	0	0	0	0	0	0	0	9
9:45	1	1	4	3	2	0	0	0	0	0	0	0	0	0	11
10:00	0	3	2	5	1	0	0	0	0	0	0	0	0	0	11
10:15	0	4	5	0	0	0	0	0	0	0	0	0	0	0	9
10:30	1	8	16	10	5	0	0	0	0	0	0	0	0	0	40
10:45	1	3	3	1	1	0	0	0	0	0	0	0	0	0	9
11:00	0	5	6	2	3	0	0	0	0	0	0	0	0	0	16
11:15	0	1	3	5	3	1	0	0	0	0	0	0	0	0	13
11:30	0	4	7	1	5	0	1	0	0	0	0	0	0	0	18
11:45	1	13	19	9	12	1	1	0	0	0	0	0	0	0	56
Total	9	69	80	76	45	14	1	2	0	0	0	0	0	0	296

Northeast

Ira Avenue
 Btwn Loveland St & Lubec St

Site Code: 6603 Ira Avenue

Page 2

Start Time	15	16	21	26	31	36	41	46	51	56	61	66	71	76	999	Total
12:00 PM	2	1	8	5	7	1	0	1	0	0	0	0	0	0	0	25
12:15	0	4	3	8	2	0	0	0	0	0	0	0	0	0	0	17
12:30	0	6	8	2	2	0	0	0	0	0	0	0	0	0	0	18
12:45	3	3	11	4	2	1	0	0	0	0	0	0	0	0	0	24
13:00	5	14	30	19	13	2	0	1	0	0	0	0	0	0	0	84
13:15	1	3	6	3	0	2	1	0	0	0	0	0	0	0	0	16
13:30	0	3	4	4	3	1	0	0	0	0	0	0	0	0	0	15
13:45	1	2	4	3	3	2	0	0	0	0	0	0	0	0	0	15
13:59	0	5	4	5	2	0	0	0	0	0	0	0	0	0	0	16
14:00	2	13	18	15	8	5	1	0	0	0	0	0	0	0	0	62
14:15	0	1	3	5	0	1	0	0	0	0	0	0	0	0	0	10
14:30	2	4	8	5	3	0	0	0	0	0	0	0	0	0	0	22
14:45	1	4	6	2	0	1	0	0	0	0	0	0	0	0	0	14
14:59	0	5	5	3	6	0	0	0	0	0	0	0	0	0	0	19
15:00	3	14	22	15	9	2	0	0	0	0	0	0	0	0	0	65
15:15	1	4	6	4	3	2	2	0	0	0	0	0	0	0	0	22
15:30	0	1	6	11	5	1	0	0	0	0	0	0	0	0	0	24
15:45	0	3	4	8	4	3	0	0	0	0	0	0	0	0	0	22
15:59	1	3	7	7	1	0	0	0	0	0	0	0	0	0	0	19
16:00	2	11	23	30	13	6	2	0	0	0	0	0	0	0	0	87
16:15	0	1	4	6	7	3	0	0	0	0	0	0	0	0	0	21
16:30	1	1	1	6	5	4	1	0	0	0	0	0	0	0	0	19
16:45	0	1	1	5	4	4	0	0	0	0	0	0	0	0	0	15
16:59	0	1	2	7	4	1	1	0	0	0	0	0	0	0	0	16
17:00	1	4	8	24	20	12	2	0	0	0	0	0	0	0	0	71
17:15	2	4	5	1	6	5	1	0	0	0	0	0	0	0	0	24
17:30	0	3	3	7	3	0	1	1	0	0	0	0	0	0	0	18
17:45	4	7	6	10	4	0	0	0	0	0	0	0	0	0	0	31
17:59	0	2	7	9	2	0	0	0	1	0	0	0	0	0	0	21
18:00	6	16	21	27	15	5	2	1	1	0	0	0	0	0	0	94
18:15	1	2	7	3	6	0	0	0	0	0	0	0	0	0	0	19
18:30	0	7	10	3	4	1	0	0	0	0	0	0	0	0	0	25
18:45	0	3	7	7	3	1	0	0	0	0	0	0	0	0	0	21
18:59	0	1	4	5	9	6	0	0	0	0	0	0	0	0	0	25
19:00	1	13	28	18	22	8	0	0	0	0	0	0	0	0	0	90
19:15	2	2	1	4	0	1	0	1	0	0	0	0	0	0	0	11
19:30	0	2	5	6	6	2	0	0	0	0	0	0	0	0	0	21
19:45	1	6	7	3	1	1	0	0	0	0	0	0	0	0	0	19
19:59	0	5	4	4	2	1	0	0	0	0	0	0	0	0	0	16
20:00	3	15	17	17	9	5	0	1	0	0	0	0	0	0	0	67
20:15	1	1	6	2	2	1	1	0	0	0	0	0	0	0	0	14
20:30	1	2	2	4	5	0	0	0	0	0	0	0	0	0	0	14
20:45	0	3	6	4	4	1	0	0	0	0	0	0	0	0	0	18
20:59	0	6	8	2	0	0	0	0	0	0	0	0	0	0	0	16
21:00	2	12	22	12	11	2	1	0	0	0	0	0	0	0	0	62
21:15	0	4	6	3	0	0	0	0	0	0	0	0	0	0	0	13
21:30	1	3	6	2	2	0	0	0	0	0	0	0	0	0	0	14
21:45	0	4	3	8	2	1	0	0	0	0	0	0	0	0	0	18
21:59	1	1	3	2	3	0	0	0	0	0	0	0	0	0	0	10
22:00	2	12	18	15	7	1	0	0	0	0	0	0	0	0	0	55
22:15	0	1	4	1	2	0	0	0	0	0	0	0	0	0	0	8
22:30	0	1	1	1	2	1	0	0	0	0	0	0	0	0	0	6
22:45	0	1	0	2	1	1	0	0	0	0	0	0	0	0	0	5
22:59	1	1	0	2	1	0	0	0	0	0	0	0	0	0	0	5
23:00	1	4	5	6	6	2	0	0	0	0	0	0	0	0	0	24
23:15	0	0	1	2	0	1	0	0	0	0	0	0	0	0	0	4
23:30	1	1	2	1	3	0	0	0	0	0	0	0	0	0	0	8
23:45	0	1	0	2	3	1	0	0	0	0	0	0	0	0	0	7
23:59	0	3	0	2	0	0	0	0	0	0	0	0	0	0	0	5
Total	1	5	3	7	6	2	0	0	0	0	0	0	0	0	0	24
Grand Total	29	133	215	205	139	52	8	3	1	0	0	0	0	0	0	785
Grand Total	38	202	295	281	184	66	9	5	1	0	0	0	0	0	0	1081

15th Percentile : 19 MPH
 50th Percentile : 26 MPH
 85th Percentile : 33 MPH
 95th Percentile : 37 MPH

Stats
 Mean Speed(Average) : 26 MPH
 10 MPH Pace Speed : 21-30 MPH
 Number in Pace : 576
 Percent in Pace : 53.30%
 Number of Vehicles > 25 MPH : 546
 Percent of Vehicles > 25 MPH : 50.50%

Southwest

Ira Avenue
Btwn Loveland St & Lubec St

Site Code: 6603 Ira Avenue

Page 3

Start Time	15	20	25	30	35	40	45	50	55	60	65	70	75	999	Total
5/21/2022	0	1	1	1	0	0	0	0	0	0	0	0	0	0	3
0:15	0	0	2	0	0	5	0	0	0	0	0	0	0	0	7
0:30	0	2	2	1	1	0	0	0	0	0	0	0	0	0	6
0:45	0	2	2	2	0	1	0	0	0	0	0	0	0	0	7
1:00	0	5	7	4	1	6	0	0	0	0	0	0	0	0	23
1:15	0	0	0	0	0	0	0	0	0	0	0	0	0	0	0
1:30	0	2	0	2	2	0	0	0	0	0	0	0	0	0	6
1:45	0	2	1	2	0	0	0	0	0	0	0	0	0	0	5
2:00	0	0	0	1	0	0	0	0	0	0	0	0	0	0	1
2:15	0	4	1	5	2	0	0	0	0	0	0	0	0	0	12
2:30	0	0	2	1	0	0	0	0	0	0	0	0	0	0	3
2:45	0	1	2	0	1	0	0	0	0	0	0	0	0	0	4
3:00	1	0	2	2	0	0	0	0	0	0	0	0	0	0	5
3:15	0	0	0	0	1	1	0	0	0	0	0	0	0	0	2
3:30	0	0	0	0	1	0	0	0	0	0	0	0	0	0	1
3:45	0	0	0	1	0	0	0	0	0	0	0	0	0	0	1
4:00	0	0	0	1	2	1	0	0	0	0	0	0	0	0	4
4:15	0	0	2	0	0	0	0	0	0	0	0	0	0	0	2
4:30	0	0	1	0	0	0	0	0	0	0	0	0	0	0	1
4:45	0	0	1	0	0	1	0	0	0	0	0	0	0	0	2
5:00	0	0	0	0	0	0	0	0	0	0	0	0	0	0	0
5:15	0	0	4	0	0	1	0	0	0	0	0	0	0	0	5
5:30	1	0	1	0	0	0	0	0	0	0	0	0	0	0	2
5:45	0	0	1	0	0	0	0	0	0	0	0	0	0	0	1
6:00	0	2	2	1	0	0	0	0	0	0	0	0	0	0	5
6:15	1	2	3	1	1	1	0	0	0	0	0	0	0	0	9
6:30	0	0	2	2	0	1	1	0	0	0	0	0	0	0	6
6:45	0	1	1	0	1	0	1	0	0	0	0	0	0	0	4
7:00	0	1	1	1	0	0	0	0	0	0	0	0	0	0	3
7:15	0	0	3	6	2	0	0	0	0	0	0	0	0	0	11
7:30	0	2	7	9	3	1	2	0	0	0	0	0	0	0	24
7:45	0	0	1	3	2	1	0	0	0	0	0	0	0	0	7
8:00	1	1	4	4	4	3	0	0	0	0	0	0	0	0	17
8:15	0	1	4	2	2	1	0	0	0	0	0	0	0	0	10
8:30	0	1	4	4	3	0	0	0	0	0	0	0	0	0	12
8:45	1	3	13	13	11	5	0	0	0	0	0	0	0	0	46
9:00	0	4	1	5	1	0	0	0	0	0	0	0	0	0	11
9:15	1	1	0	4	2	0	0	0	0	0	0	0	0	0	8
9:30	0	2	4	5	2	1	0	0	0	0	0	0	0	0	14
9:45	0	1	3	5	3	0	0	0	0	0	0	0	0	0	12
10:00	1	8	8	19	8	1	0	0	0	0	0	0	0	0	45
10:15	0	2	3	7	1	1	0	0	0	0	0	0	0	0	14
10:30	1	2	3	4	3	0	0	0	0	0	0	0	0	0	13
10:45	0	5	5	2	0	0	0	0	0	0	0	0	0	0	12
11:00	0	2	7	2	0	0	0	0	0	0	0	0	0	0	11
11:15	1	11	18	15	4	1	0	0	0	0	0	0	0	0	50
11:30	1	4	5	3	0	0	0	0	0	0	0	0	0	0	13
11:45	0	4	5	7	2	2	0	1	0	0	0	0	0	0	21
Total	8	56	98	103	50	27	3	2	0	0	0	0	0	0	347

Southwest

Ira Avenue
 Btwn Loveland St & Lubec St

Site Code: 6603 Ira Avenue

Page 4

Start Time	15	16	21	26	31	36	41	46	51	56	61	66	71	76	999	Total
12:00 PM	1	5	3	3	2	1	0	0	0	0	0	0	0	0	0	15
12:15	1	2	5	6	0	2	1	0	0	0	0	0	0	0	0	17
12:30	0	3	4	8	5	2	0	0	0	0	0	0	0	0	0	22
12:45	1	4	2	5	2	1	0	0	0	0	0	0	0	0	0	15
13:00	3	14	14	22	9	6	1	0	0	0	0	0	0	0	0	69
13:15	1	3	6	4	3	1	1	0	0	0	0	0	0	0	0	19
13:30	0	4	3	2	3	1	2	0	0	0	0	0	0	0	0	15
13:45	0	2	6	3	2	1	0	0	0	0	0	0	0	0	0	14
14:00	0	4	2	3	3	0	0	0	0	0	0	0	0	0	0	12
14:15	1	13	17	12	11	3	3	0	0	0	0	0	0	0	0	60
14:30	0	1	3	2	3	0	0	0	0	0	0	0	0	0	0	9
14:45	1	0	5	3	1	1	0	0	0	0	0	0	0	0	0	11
15:00	0	3	3	3	2	0	0	0	0	0	0	0	0	0	0	11
15:15	2	2	9	8	3	2	1	0	0	0	0	0	0	0	0	27
15:30	3	6	20	16	9	3	1	0	0	0	0	0	0	0	0	58
15:45	0	2	7	7	3	1	0	0	0	0	0	0	0	0	0	20
16:00	0	1	6	7	3	3	0	0	0	0	0	0	0	0	0	20
16:15	0	2	7	7	4	0	0	0	0	0	0	0	0	0	0	20
16:30	1	4	3	2	3	0	1	0	0	0	0	0	0	0	0	14
16:45	1	9	23	23	13	4	1	0	0	0	0	0	0	0	0	74
17:00	1	2	8	4	2	1	0	0	0	0	0	0	0	0	0	18
17:15	0	3	5	5	4	0	0	0	0	0	0	0	0	0	0	17
17:30	1	5	3	4	2	2	0	0	0	0	0	0	0	0	0	17
17:45	0	2	4	4	1	1	0	0	0	0	0	0	0	0	0	12
18:00	2	12	20	17	9	4	0	0	0	0	0	0	0	0	0	64
18:15	0	5	5	3	2	0	1	0	0	0	0	0	0	0	0	16
18:30	2	5	6	4	2	0	0	0	0	0	0	0	0	0	0	19
18:45	0	5	6	5	2	1	1	0	0	0	0	0	0	0	0	20
19:00	1	1	5	4	1	1	0	0	0	0	0	0	0	0	0	13
19:15	3	16	22	16	7	2	2	0	0	0	0	0	0	0	0	68
19:30	0	5	6	5	1	0	0	0	0	0	0	0	0	0	0	17
19:45	1	3	6	5	2	0	0	0	0	0	0	0	0	0	0	17
20:00	0	3	4	3	1	0	0	0	0	0	0	0	0	0	0	11
20:15	1	3	8	7	0	0	1	0	0	0	0	0	0	0	0	20
20:30	2	14	24	20	4	0	1	0	0	0	0	0	0	0	0	65
20:45	0	3	7	1	1	0	0	0	0	0	0	0	0	0	0	12
21:00	0	3	6	2	1	1	1	0	0	0	0	0	0	0	0	14
21:15	0	2	6	5	1	0	1	1	0	0	0	0	0	0	0	16
21:30	0	0	2	2	2	0	0	0	0	0	0	0	0	0	0	6
21:45	0	8	21	10	5	1	2	1	0	0	0	0	0	0	0	48
22:00	2	0	2	5	1	3	0	0	0	0	0	0	0	0	0	13
22:15	0	3	8	6	1	0	0	0	0	0	0	0	0	0	0	18
22:30	0	4	5	2	1	1	0	0	0	0	0	0	0	0	0	13
22:45	0	4	4	2	1	1	1	0	0	0	0	0	0	0	0	13
23:00	2	11	19	15	4	5	1	0	0	0	0	0	0	0	0	57
23:15	0	2	4	3	0	0	0	0	0	0	0	0	0	0	0	9
23:30	0	1	3	3	1	0	0	0	0	0	0	0	0	0	0	8
23:45	0	2	4	2	4	1	0	0	0	0	0	0	0	0	0	13
00:00	0	2	5	2	3	0	1	0	0	0	0	0	0	0	0	13
00:15	0	7	16	10	8	1	1	0	0	0	0	0	0	0	0	43
00:30	1	0	1	2	2	0	0	1	0	0	0	0	0	0	0	7
00:45	0	0	2	0	1	0	0	0	0	0	0	0	0	0	0	3
01:00	0	0	1	2	0	0	0	0	0	0	0	0	0	0	0	3
01:15	0	1	1	1	1	0	0	0	0	0	0	0	0	0	0	4
01:30	1	1	5	5	4	0	0	1	0	0	0	0	0	0	0	17
01:45	0	1	2	3	2	1	0	0	0	0	0	0	0	0	0	9
02:00	0	1	4	2	0	0	0	0	0	0	0	0	0	0	0	7
02:15	0	1	0	3	1	0	0	0	0	0	0	0	0	0	0	5
02:30	0	0	1	1	1	0	0	0	0	0	0	0	0	0	0	3
02:45	0	3	7	9	4	1	0	0	0	0	0	0	0	0	0	24
Total	18	114	208	175	87	30	13	2	0	0	0	0	0	0	0	647
Grand Total	26	170	306	278	137	57	16	4	0	0	0	0	0	0	0	994

15th Percentile : 19 MPH
 50th Percentile : 25 MPH
 85th Percentile : 33 MPH
 95th Percentile : 38 MPH

Stats
 Mean Speed(Average) : 26 MPH
 10 MPH Pace Speed : 21-30 MPH
 Number in Pace : 584
 Percent in Pace : 58.80%
 Number of Vehicles > 25 MPH : 492
 Percent of Vehicles > 25 MPH : 49.50%

Northeast, Southwest

Ira Avenue
 Btwn Loveland St & Lubec St

Site Code: 6603 Ira Avenue

Page 6

Start Time	15	16	21	26	31	36	41	46	51	56	61	66	71	76	999	Total
12:00 PM	3	6	11	8	9	2	0	1	0	0	0	0	0	0	0	40
12:15	1	6	8	14	2	2	1	0	0	0	0	0	0	0	0	34
12:30	0	9	12	10	7	2	0	0	0	0	0	0	0	0	0	40
12:45	4	7	13	9	4	2	0	0	0	0	0	0	0	0	0	39
13:00	8	28	44	41	22	8	1	1	0	0	0	0	0	0	0	153
13:15	2	6	12	7	3	3	2	0	0	0	0	0	0	0	0	35
13:30	0	7	7	6	6	2	2	0	0	0	0	0	0	0	0	30
13:45	1	4	10	6	5	3	0	0	0	0	0	0	0	0	0	29
14:00	0	9	6	8	5	0	0	0	0	0	0	0	0	0	0	28
14:15	3	26	35	27	19	8	4	0	0	0	0	0	0	0	0	122
14:30	0	2	6	7	3	1	0	0	0	0	0	0	0	0	0	19
14:45	3	4	13	8	4	1	0	0	0	0	0	0	0	0	0	33
15:00	1	7	9	5	2	1	0	0	0	0	0	0	0	0	0	25
15:15	2	7	14	11	9	2	1	0	0	0	0	0	0	0	0	46
15:30	6	20	42	31	18	5	1	0	0	0	0	0	0	0	0	123
15:45	1	6	13	11	6	3	2	0	0	0	0	0	0	0	0	42
16:00	0	2	12	18	8	4	0	0	0	0	0	0	0	0	0	44
16:15	0	5	11	15	8	3	0	0	0	0	0	0	0	0	0	42
16:30	2	7	10	9	4	0	1	0	0	0	0	0	0	0	0	33
16:45	3	20	46	53	26	10	3	0	0	0	0	0	0	0	0	161
17:00	1	3	12	10	9	4	0	0	0	0	0	0	0	0	0	39
17:15	1	4	6	11	9	4	1	0	0	0	0	0	0	0	0	36
17:30	1	6	4	9	6	6	0	0	0	0	0	0	0	0	0	32
17:45	0	3	6	11	5	2	1	0	0	0	0	0	0	0	0	28
18:00	3	16	28	41	29	16	2	0	0	0	0	0	0	0	0	135
18:15	2	9	10	4	8	5	2	0	0	0	0	0	0	0	0	40
18:30	2	8	9	11	5	0	1	1	0	0	0	0	0	0	0	37
18:45	4	12	12	15	6	1	1	0	0	0	0	0	0	0	0	51
19:00	1	3	12	13	3	1	0	0	1	0	0	0	0	0	0	34
19:15	9	32	43	43	22	7	4	1	1	0	0	0	0	0	0	162
19:30	1	7	13	8	7	0	0	0	0	0	0	0	0	0	0	36
19:45	1	10	16	8	6	1	0	0	0	0	0	0	0	0	0	42
20:00	0	6	11	10	4	1	0	0	0	0	0	0	0	0	0	32
20:15	1	4	12	12	9	6	1	0	0	0	0	0	0	0	0	45
20:30	3	27	52	38	26	8	1	0	0	0	0	0	0	0	0	155
20:45	2	5	8	5	1	1	0	1	0	0	0	0	0	0	0	23
21:00	0	5	11	8	7	3	1	0	0	0	0	0	0	0	0	35
21:15	1	8	13	8	2	1	1	1	0	0	0	0	0	0	0	35
21:30	0	5	6	6	4	1	0	0	0	0	0	0	0	0	0	22
21:45	3	23	38	27	14	6	2	2	0	0	0	0	0	0	0	115
22:00	3	1	8	7	3	4	1	0	0	0	0	0	0	0	0	27
22:15	1	5	10	10	6	0	0	0	0	0	0	0	0	0	0	32
22:30	0	7	11	6	5	2	0	0	0	0	0	0	0	0	0	31
22:45	0	10	12	4	1	1	1	0	0	0	0	0	0	0	0	29
23:00	4	23	41	27	15	7	2	0	0	0	0	0	0	0	0	119
23:15	0	6	10	6	0	0	0	0	0	0	0	0	0	0	0	22
23:30	1	4	9	5	3	0	0	0	0	0	0	0	0	0	0	22
23:45	0	6	7	10	6	2	0	0	0	0	0	0	0	0	0	31
24:00	1	3	8	4	6	0	1	0	0	0	0	0	0	0	0	23
24:15	2	19	34	25	15	2	1	0	0	0	0	0	0	0	0	98
24:30	1	1	5	3	4	0	0	1	0	0	0	0	0	0	0	15
24:45	0	1	3	1	3	1	0	0	0	0	0	0	0	0	0	9
25:00	0	1	1	4	1	1	0	0	0	0	0	0	0	0	0	8
25:15	1	2	1	3	2	0	0	0	0	0	0	0	0	0	0	9
25:30	2	5	10	11	10	2	0	1	0	0	0	0	0	0	0	41
25:45	0	1	3	5	2	2	0	0	0	0	0	0	0	0	0	13
26:00	1	2	6	3	3	0	0	0	0	0	0	0	0	0	0	15
26:15	0	2	0	5	4	1	0	0	0	0	0	0	0	0	0	12
26:30	0	3	1	3	1	0	0	0	0	0	0	0	0	0	0	8
26:45	1	8	10	16	10	3	0	0	0	0	0	0	0	0	0	48
Total	47	247	423	380	226	82	21	5	1	0	0	0	0	0	0	1432
Grand Total	64	372	601	559	321	123	25	9	1	0	0	0	0	0	0	2075

15th Percentile : 19 MPH
 50th Percentile : 26 MPH
 85th Percentile : 33 MPH
 95th Percentile : 38 MPH

Stats
 Mean Speed(Average) : 26 MPH
 10 MPH Pace Speed : 21-30 MPH
 Number in Pace : 1160
 Percent in Pace : 55.90%
 Number of Vehicles > 25 MPH : 1038
 Percent of Vehicles > 25 MPH : 50.00%

Ira Avenue
Btwn Loveland St & Lubec St

Site Code: 6603 Ira Avenue

Page 1

Start Time	21-May-22		Northeast		Hour Totals		Southwest		Hour Totals		Combined Totals	
	Sat		Morning	Afternoon	Morning	Afternoon	Morning	Afternoon	Morning	Afternoon	Morning	Afternoon
12:00			2	25			3	15				
12:15			7	17			7	17				
12:30			5	18			6	22				
12:45			6	24	20	84	7	15	23	69	43	153
1:00			2	16			0	19				
1:15			3	15			6	15				
1:30			1	15			5	14				
1:45			4	16	10	62	1	12	12	60	22	122
2:00			4	10			3	9				
2:15			2	22			4	11				
2:30			2	14			5	11				
2:45			0	19	8	65	2	27	14	58	22	123
3:00			2	22			0	20				
3:15			1	24			2	20				
3:30			2	22			1	20				
3:45			0	19	5	87	1	14	4	74	9	161
4:00			2	21			2	18				
4:15			1	19			1	17				
4:30			4	15			2	17				
4:45			3	16	10	71	0	12	5	64	15	135
5:00			1	24			2	16				
5:15			1	18			1	19				
5:30			4	31			1	20				
5:45			2	21	8	94	5	13	9	68	17	162
6:00			1	19			6	17				
6:15			1	25			4	17				
6:30			4	21			3	11				
6:45			9	25	15	90	11	20	24	65	39	155
7:00			7	11			7	12				
7:15			9	21			17	14				
7:30			8	19			10	16				
7:45			7	16	31	67	12	6	46	48	77	115
8:00			6	14			11	13				
8:15			3	14			8	18				
8:30			10	18			14	13				
8:45			10	16	29	62	12	13	45	57	74	119
9:00			9	13			14	9				
9:15			11	14			13	8				
9:30			11	18			12	13				
9:45			9	10	40	55	11	13	50	43	90	98
10:00			9	8			13	7				
10:15			16	6			21	3				
10:30			13	5			11	3				
10:45			18	5	56	24	12	4	57	17	113	41
11:00			16	4			17	9				
11:15			14	8			15	7				
11:30			15	7			15	5				
11:45			19	5	64	24	11	3	58	24	122	48
Total			296	785			347	647			643	1432
Percent			27.40%	72.60%			34.90%	65.10%			31.00%	69.00%
Grand Total			296	785			347	647			643	1432
Percent			27.40%	72.60%			34.90%	65.10%			31.00%	69.00%

Northeast

Ira Avenue
 Btwn Loveland St & Lubec St

Site Code: 6603 Ira Avenue

Page 2

Start Time	15	16	21	26	31	36	41	46	51	56	61	66	71	76	999	Total
12:00 PM	1	2	2	5	1	1	0	0	0	0	0	0	0	0	0	12
12:15	1	3	4	8	5	0	1	0	0	0	0	0	0	0	0	22
12:30	0	3	7	6	1	0	0	0	0	0	0	0	0	0	0	17
12:45	1	3	9	4	1	1	0	0	0	0	0	0	0	0	0	19
13:00	3	11	22	23	8	2	1	0	0	0	0	0	0	0	0	70
13:15	1	3	3	1	2	1	0	0	0	0	0	0	0	0	0	11
13:30	1	1	2	5	3	1	0	0	0	0	0	0	0	0	0	13
13:45	0	5	2	6	0	1	0	0	0	0	0	0	0	0	0	14
14:00	0	0	9	2	3	1	1	0	0	0	0	0	0	0	0	16
14:15	2	9	16	14	8	4	1	0	0	0	0	0	0	0	0	54
14:30	0	3	6	6	3	0	0	0	0	0	0	0	0	0	0	18
14:45	1	1	6	2	1	0	0	0	0	0	0	0	0	0	0	11
15:00	1	1	9	2	2	1	0	0	0	0	0	0	0	0	0	16
15:15	0	1	4	3	4	1	0	0	0	0	0	0	0	0	0	13
15:30	2	6	25	13	10	2	0	0	0	0	0	0	0	0	0	58
15:45	0	1	1	3	3	0	1	0	0	0	0	0	0	0	0	9
16:00	1	0	3	8	2	2	1	0	0	0	0	0	0	0	0	17
16:15	0	5	7	4	2	0	1	0	0	0	0	0	0	0	0	19
16:30	1	1	1	5	4	1	0	0	0	0	0	0	0	0	0	13
16:45	2	7	12	20	11	3	3	0	0	0	0	0	0	0	0	58
17:00	2	3	3	9	2	0	1	0	0	0	0	0	0	0	0	20
17:15	0	4	5	4	1	0	0	0	0	0	0	0	0	0	0	14
17:30	1	2	4	2	2	1	0	0	0	0	0	0	0	0	0	12
17:45	2	3	3	4	4	2	0	0	0	0	0	0	0	0	0	18
18:00	5	12	15	19	9	3	1	0	0	0	0	0	0	0	0	64
18:15	1	4	3	5	2	2	0	0	0	0	0	0	0	0	0	17
18:30	0	2	4	2	3	1	0	0	0	0	0	0	0	0	0	12
18:45	1	5	7	2	1	0	0	0	0	0	0	0	0	0	0	16
19:00	0	5	2	2	3	1	0	0	0	0	0	0	0	0	0	13
19:15	2	16	16	11	9	4	0	0	0	0	0	0	0	0	0	58
19:30	1	3	4	8	4	2	0	0	0	0	0	0	0	0	0	22
19:45	0	2	0	6	9	4	0	0	0	0	0	0	0	0	0	21
20:00	1	3	3	5	3	1	0	0	0	0	0	0	0	0	0	16
20:15	0	3	3	4	6	1	0	0	0	0	0	0	0	0	0	17
20:30	2	11	10	23	22	8	0	0	0	0	0	0	0	0	0	76
20:45	1	1	2	10	2	0	0	0	0	0	0	0	0	0	0	16
21:00	0	3	4	7	3	1	1	0	0	0	0	0	0	0	0	19
21:15	0	1	3	3	3	4	0	0	0	0	0	0	0	0	0	14
21:30	0	4	5	3	5	0	0	0	0	0	0	0	0	0	0	17
21:45	1	9	14	23	13	5	1	0	0	0	0	0	0	0	0	66
22:00	0	0	4	3	8	1	0	0	0	0	0	0	0	0	0	16
22:15	1	3	4	3	1	0	0	0	0	0	0	0	0	0	0	12
22:30	0	2	5	2	0	0	0	0	0	0	0	0	0	0	0	9
22:45	0	0	7	5	1	1	0	0	0	0	0	0	0	0	0	14
23:00	1	5	20	13	10	2	0	0	0	0	0	0	0	0	0	51
23:15	0	3	5	3	3	1	2	0	0	0	0	0	0	0	0	17
23:30	0	1	1	0	2	0	0	0	0	0	0	0	0	0	0	4
23:45	0	0	1	2	1	0	0	0	0	0	0	0	0	0	0	4
24:00	0	1	4	4	1	1	0	0	0	0	0	0	0	0	0	11
24:15	0	5	11	9	7	2	2	0	0	0	0	0	0	0	0	36
24:30	1	1	1	3	2	1	0	0	0	0	0	0	0	0	0	9
24:45	0	0	0	1	2	0	0	1	0	0	0	0	0	0	0	4
25:00	0	1	0	3	1	0	0	0	0	0	0	0	0	0	0	5
25:15	0	0	1	1	1	0	0	0	0	0	0	0	0	0	0	3
25:30	1	2	2	8	6	1	0	1	0	0	0	0	0	0	0	21
25:45	0	0	4	1	1	0	0	0	0	0	0	0	0	0	0	6
26:00	0	1	2	1	1	0	0	0	0	0	0	0	0	0	0	5
26:15	0	0	2	3	1	0	0	1	0	0	0	0	0	0	0	7
26:30	0	0	2	2	2	0	0	0	0	0	0	0	0	0	0	6
26:45	0	1	10	7	5	0	0	1	0	0	0	0	0	0	0	24
Total	21	94	173	183	118	36	9	2	0	0	0	0	0	0	0	636
Grand Total	28	123	236	261	178	56	14	2	0	0	0	0	0	0	0	898

15th Percentile : 20 MPH
 50th Percentile : 27 MPH
 85th Percentile : 34 MPH
 95th Percentile : 38 MPH

Stats
 Mean Speed(Average) : 27 MPH
 10 MPH Pace Speed : 21-30 MPH
 Number in Pace : 497
 Percent in Pace : 55.30%
 Number of Vehicles > 25 MPH : 511
 Percent of Vehicles > 25 MPH : 56.90%

Southwest

Ira Avenue
 Btwn Loveland St & Lubec St

Site Code: 6603 Ira Avenue

Page 4

Start Time	15	16	20	21	25	26	30	31	35	36	40	41	45	46	50	51	55	56	60	61	65	66	70	71	75	76	999	Total
12:00 PM	2	1	7	3	0	1	0	0	0	0	0	0	0	0	0	0	0	0	0	0	0	0	0	0	0	0	14	
12:15	4	4	7	3	3	1	0	0	0	0	0	0	0	0	0	0	0	0	0	0	0	0	0	0	0	0	22	
12:30	0	2	6	6	4	1	0	0	0	0	0	0	0	0	0	0	0	0	0	0	0	0	0	0	0	0	19	
12:45	1	2	2	11	5	0	0	0	0	0	0	0	0	0	0	0	0	0	0	0	0	0	0	0	0	0	21	
13:00	7	9	22	23	12	3	0	0	0	0	0	0	0	0	0	0	0	0	0	0	0	0	0	0	0	0	76	
13:15	0	0	5	3	6	0	0	1	0	0	0	0	0	0	0	0	0	0	0	0	0	0	0	0	0	0	15	
13:30	1	4	7	2	1	0	0	0	0	0	0	0	0	0	0	0	0	0	0	0	0	0	0	0	0	0	15	
13:45	2	0	2	7	5	3	0	0	0	0	0	0	0	0	0	0	0	0	0	0	0	0	0	0	0	0	19	
14:00	0	0	3	7	1	0	0	0	0	0	0	0	0	0	0	0	0	0	0	0	0	0	0	0	0	0	11	
14:15	3	4	17	19	13	3	0	1	0	0	0	0	0	0	0	0	0	0	0	0	0	0	0	0	0	0	60	
14:30	0	1	2	7	2	1	0	0	0	0	0	0	0	0	0	0	0	0	0	0	0	0	0	0	0	0	13	
14:45	1	1	5	6	2	1	0	0	0	0	0	0	0	0	0	0	0	0	0	0	0	0	0	0	0	0	16	
15:00	0	5	6	5	2	1	0	0	0	0	0	0	0	0	0	0	0	0	0	0	0	0	0	0	0	0	19	
15:15	0	2	7	7	3	1	0	0	0	0	0	0	0	0	0	0	0	0	0	0	0	0	0	0	0	0	20	
15:30	1	9	20	25	9	4	0	0	0	0	0	0	0	0	0	0	0	0	0	0	0	0	0	0	0	0	68	
15:45	1	2	5	4	7	0	0	0	0	0	0	0	0	0	0	0	0	0	0	0	0	0	0	0	0	0	19	
16:00	1	3	2	5	1	2	2	0	0	0	0	0	0	0	0	0	0	0	0	0	0	0	0	0	0	0	16	
16:15	2	2	0	3	3	0	0	0	0	0	0	0	0	0	0	0	0	0	0	0	0	0	0	0	0	0	10	
16:30	0	2	4	6	3	0	0	0	0	0	0	0	0	0	0	0	0	0	0	0	0	0	0	0	0	0	15	
16:45	4	9	11	18	14	2	2	0	0	0	0	0	0	0	0	0	0	0	0	0	0	0	0	0	0	0	60	
17:00	0	4	5	3	3	1	1	0	0	0	0	0	0	0	0	0	0	0	0	0	0	0	0	0	0	0	17	
17:15	0	5	7	3	4	1	0	0	0	0	0	0	0	0	0	0	0	0	0	0	0	0	0	0	0	0	20	
17:30	1	3	5	4	6	0	0	0	0	0	0	0	0	0	0	0	0	0	0	0	0	0	0	0	0	0	19	
17:45	0	4	3	4	2	2	0	0	0	0	0	0	0	0	0	0	0	0	0	0	0	0	0	0	0	0	15	
18:00	1	16	20	14	15	4	1	0	0	0	0	0	0	0	0	0	0	0	0	0	0	0	0	0	0	0	71	
18:15	1	2	4	6	4	0	0	0	0	0	0	0	0	0	0	0	0	0	0	0	0	0	0	0	0	0	17	
18:30	0	4	4	5	3	2	0	0	0	0	0	0	0	0	0	0	0	0	0	0	0	0	0	0	0	0	18	
18:45	1	5	3	9	3	1	0	0	0	0	0	0	0	0	0	0	0	0	0	0	0	0	0	0	0	0	22	
19:00	1	3	5	7	7	0	1	0	0	0	0	0	0	0	0	0	0	0	0	0	0	0	0	0	0	0	24	
19:15	3	14	16	27	17	3	1	0	0	0	0	0	0	0	0	0	0	0	0	0	0	0	0	0	0	0	81	
19:30	0	2	2	8	1	0	0	0	0	0	0	0	0	0	0	0	0	0	0	0	0	0	0	0	0	0	13	
19:45	2	2	5	6	2	0	0	0	0	0	0	0	0	0	0	0	0	0	0	0	0	0	0	0	0	0	17	
20:00	1	0	2	2	2	3	1	0	0	0	0	0	0	0	0	0	0	0	0	0	0	0	0	0	0	0	11	
20:15	2	1	2	4	3	0	1	0	0	0	0	0	0	0	0	0	0	0	0	0	0	0	0	0	0	0	13	
20:30	5	5	11	20	8	3	2	0	0	0	0	0	0	0	0	0	0	0	0	0	0	0	0	0	0	0	54	
20:45	0	3	5	3	2	0	2	0	0	0	0	0	0	0	0	0	0	0	0	0	0	0	0	0	0	0	15	
21:00	0	0	2	3	0	0	0	1	0	0	0	0	0	0	0	0	0	0	0	0	0	0	0	0	0	0	6	
21:15	1	1	3	4	5	1	0	0	0	0	0	0	0	0	0	0	0	0	0	0	0	0	0	0	0	0	15	
21:30	0	0	1	5	3	0	0	0	0	0	0	0	0	0	0	0	0	0	0	0	0	0	0	0	0	0	9	
21:45	1	4	11	15	10	1	2	1	0	0	0	0	0	0	0	0	0	0	0	0	0	0	0	0	0	0	45	
22:00	0	1	4	4	2	0	0	0	0	0	0	0	0	0	0	0	0	0	0	0	0	0	0	0	0	0	11	
22:15	0	2	5	6	1	1	0	0	0	0	0	0	0	0	0	0	0	0	0	0	0	0	0	0	0	0	15	
22:30	1	0	4	0	1	0	0	0	0	0	0	0	0	0	0	0	0	0	0	0	0	0	0	0	0	0	6	
22:45	0	1	5	3	1	0	0	0	0	0	0	0	0	0	0	0	0	0	0	0	0	0	0	0	0	0	10	
23:00	1	4	18	13	5	1	0	0	0	0	0	0	0	0	0	0	0	0	0	0	0	0	0	0	0	0	42	
23:15	0	1	1	4	3	0	0	0	0	0	0	0	0	0	0	0	0	0	0	0	0	0	0	0	0	0	9	
23:30	1	0	3	4	2	0	0	0	0	0	0	0	0	0	0	0	0	0	0	0	0	0	0	0	0	0	10	
23:45	1	1	2	1	0	0	0	0	0	0	0	0	0	0	0	0	0	0	0	0	0	0	0	0	0	0	5	
24:00	1	1	1	2	3	0	0	0	0	0	0	0	0	0	0	0	0	0	0	0	0	0	0	0	0	0	8	
24:15	3	3	7	11	8	0	0	0	0	0	0	0	0	0	0	0	0	0	0	0	0	0	0	0	0	0	32	
24:30	1	0	2	1	1	1	0	0	0	0	0	0	0	0	0	0	0	0	0	0	0	0	0	0	0	0	6	
24:45	0	0	0	3	0	0	0	0	0	0	0	0	0	0	0	0	0	0	0	0	0	0	0	0	0	0	3	
25:00	0	0	0	3	1	0	0	0	0	0	0	0	0	0	0	0	0	0	0	0	0	0	0	0	0	0	4	
25:15	0	1	1	3	0	0	0	0	0	0	0	0	0	0	0	0	0	0	0	0	0	0	0	0	0	0	5	
25:30	1	1	3	10	2	1	0	0	0	0	0	0	0	0	0	0	0	0	0	0	0	0	0	0	0	0	18	
25:45	1	1	2	2	0	0	0	0	0	0	0	0	0	0	0	0	0	0	0	0	0	0	0	0	0	0	6	
26:00	0	0	3	1	0	0	0	0	0	0	0	0	0	0	0	0	0	0	0	0	0	0	0	0	0	0	4	
26:15	0	0	1	2	3	0	0	0	0	0	0	0	0	0	0	0	0	0	0	0	0	0	0	0	0	0	6	
26:30	0	0	0	0	0	0	0	0	0	0	0	0	0	0	0	0	0	0	0	0	0	0	0	0	0	0	0	
26:45	0	0	0	0	0	0	0	0	0	0	0	0	0	0	0	0	0	0	0	0	0	0	0	0	0	0	0	
Total	1	1	6	5	3	0	0	0	0	0	0	0	0	0	0	0	0	0	0	0	0	0	0	0	0	0	16	
Grand Total	31	79	162	200	116	25	8	2	0	0	0	0	0	0	0	0	0	0	0	0	0	0	0	0	0	0	623	
Grand Total	41	96	231	280	171	44	11	4	0	0	0	0	0	0	0	0	0	0	0	0	0	0	0	0	0	0	878	

15th Percentile : 20 MPH
 50th Percentile : 27 MPH
 85th Percentile : 33 MPH
 95th Percentile : 37 MPH

Stats
 Mean Speed(Average) : 26 MPH
 10 MPH Pace Speed : 21-30 MPH
 Number in Pace : 511
 Percent in Pace : 58.20%
 Number of Vehicles > 25 MPH : 510
 Percent of Vehicles > 25 MPH : 58.10%

Northeast, Southwest

Ira Avenue
Btwn Loveland St & Lubec St

Site Code: 6603 Ira Avenue

Page 5

Start Time	15	20	25	30	35	40	45	50	55	60	65	70	75	999	Total
5/22/2022	0	0	6	5	6	0	0	0	0	0	0	0	0	0	17
0:15	0	3	2	1	3	1	1	0	0	0	0	0	0	0	11
0:30	0	1	1	1	1	1	0	0	0	0	0	0	0	0	5
0:45	0	1	2	4	0	0	0	0	0	0	0	0	0	0	7
1:00	0	5	11	11	10	2	1	0	0	0	0	0	0	0	40
1:15	0	0	3	1	1	0	0	0	0	0	0	0	0	0	5
1:30	0	1	5	3	1	0	0	0	0	0	0	0	0	0	10
1:45	0	2	4	0	4	0	0	0	0	0	0	0	0	0	10
2:00	1	0	2	2	1	1	0	0	0	0	0	0	0	0	7
2:15	1	3	14	6	7	1	0	0	0	0	0	0	0	0	32
2:30	1	0	1	0	2	0	0	0	0	0	0	0	0	0	4
2:45	0	3	1	0	0	1	0	0	0	0	0	0	0	0	5
3:00	0	0	1	0	1	0	0	0	0	0	0	0	0	0	2
3:15	0	1	0	0	0	1	0	0	0	0	0	0	0	0	3
3:30	0	0	2	1	0	0	0	0	0	0	0	0	0	0	3
3:45	0	0	1	0	0	2	0	0	0	0	0	0	0	0	3
4:00	0	0	3	1	1	2	0	0	0	0	0	0	0	0	7
4:15	0	0	0	2	0	0	0	0	0	0	0	0	0	0	2
4:30	0	0	4	0	0	0	0	0	0	0	0	0	0	0	4
4:45	0	0	0	0	1	0	0	0	0	0	0	0	0	0	1
5:00	0	0	4	3	2	0	0	0	0	0	0	0	0	0	2
5:15	0	0	1	0	1	0	0	0	0	0	0	0	0	0	9
5:30	0	0	0	0	0	0	0	0	0	0	0	0	0	0	2
5:45	0	0	0	0	0	0	0	0	0	0	0	0	0	0	0
6:00	0	0	1	2	5	2	0	0	0	0	0	0	0	0	10
6:15	1	0	0	2	0	1	0	0	0	0	0	0	0	0	4
6:30	0	1	0	0	0	0	0	0	0	0	0	0	0	0	1
6:45	0	0	1	3	2	0	1	0	0	0	0	0	0	0	7
7:00	0	1	2	3	2	1	0	0	0	0	0	0	0	0	9
7:15	1	2	3	8	4	2	1	0	0	0	0	0	0	0	21
7:30	2	1	3	2	0	1	1	0	0	0	0	0	0	0	10
7:45	0	0	4	0	2	0	0	0	0	0	0	0	0	0	6
8:00	0	0	2	2	1	0	0	1	0	0	0	0	0	0	6
8:15	0	1	0	3	4	1	1	0	0	0	0	0	0	0	10
8:30	2	2	9	7	7	2	2	1	0	0	0	0	0	0	32
8:45	1	0	4	6	5	1	0	0	0	0	0	0	0	0	17
9:00	1	2	1	2	7	1	0	0	0	0	0	0	0	0	14
9:15	0	1	3	3	3	3	0	0	0	0	0	0	0	0	13
9:30	1	1	7	2	4	1	0	0	0	0	0	0	0	0	16
9:45	3	4	15	13	19	6	0	0	0	0	0	0	0	0	60
10:00	0	1	2	7	0	0	0	0	0	0	0	0	0	0	10
10:15	0	2	7	9	6	0	0	0	0	0	0	0	0	0	24
10:30	1	3	10	10	4	3	0	0	0	0	0	0	0	0	31
10:45	1	2	4	11	6	1	1	0	0	0	0	0	0	0	26
11:00	2	8	23	37	16	4	1	0	0	0	0	0	0	0	91
11:15	1	0	8	12	4	3	1	0	0	0	0	0	0	0	29
11:30	0	1	4	9	8	2	0	0	0	0	0	0	0	0	24
11:45	1	4	4	4	6	2	2	0	0	0	0	0	0	0	23
Total	5	11	25	33	19	8	0	1	0	0	0	0	0	0	102
Total	17	46	132	158	115	39	8	2	0	0	0	0	0	0	517

Northeast, Southwest

Ira Avenue
 Btwn Loveland St & Lubec St

Site Code: 6603 Ira Avenue

Page 6

Start Time	15	16	21	26	31	36	41	46	51	56	61	66	71	76	999	Total
12:00 PM	3	3	9	8	1	2	0	0	0	0	0	0	0	0	0	26
12:15	5	7	11	11	8	1	1	0	0	0	0	0	0	0	0	44
12:30	0	5	13	12	5	1	0	0	0	0	0	0	0	0	0	36
12:45	2	5	11	15	6	1	0	0	0	0	0	0	0	0	0	40
13:00	10	20	44	46	20	5	1	0	0	0	0	0	0	0	0	146
13:15	1	3	8	4	8	1	0	1	0	0	0	0	0	0	0	26
13:30	2	5	9	7	4	1	0	0	0	0	0	0	0	0	0	28
13:45	2	5	4	13	5	4	0	0	0	0	0	0	0	0	0	33
14:00	0	0	12	9	4	1	1	0	0	0	0	0	0	0	0	27
14:15	5	13	33	33	21	7	1	1	0	0	0	0	0	0	0	114
14:30	0	4	8	13	5	1	0	0	0	0	0	0	0	0	0	31
14:45	2	2	11	8	3	1	0	0	0	0	0	0	0	0	0	27
15:00	1	6	15	7	4	2	0	0	0	0	0	0	0	0	0	35
15:15	0	3	11	10	7	2	0	0	0	0	0	0	0	0	0	33
15:30	3	15	45	38	19	6	0	0	0	0	0	0	0	0	0	126
15:45	1	3	6	7	10	0	1	0	0	0	0	0	0	0	0	28
16:00	2	3	5	13	3	4	3	0	0	0	0	0	0	0	0	33
16:15	2	7	7	7	5	0	1	0	0	0	0	0	0	0	0	29
16:30	1	3	5	11	7	1	0	0	0	0	0	0	0	0	0	28
16:45	6	16	23	38	25	5	5	0	0	0	0	0	0	0	0	118
17:00	2	7	8	12	5	1	2	0	0	0	0	0	0	0	0	37
17:15	0	9	12	7	5	1	0	0	0	0	0	0	0	0	0	34
17:30	2	5	9	6	8	1	0	0	0	0	0	0	0	0	0	31
17:45	2	7	6	8	6	4	0	0	0	0	0	0	0	0	0	33
18:00	6	28	35	33	24	7	2	0	0	0	0	0	0	0	0	135
18:15	2	6	7	11	6	2	0	0	0	0	0	0	0	0	0	34
18:30	0	6	8	7	6	3	0	0	0	0	0	0	0	0	0	30
18:45	2	10	10	11	4	1	0	0	0	0	0	0	0	0	0	38
19:00	1	8	7	9	10	1	1	0	0	0	0	0	0	0	0	37
19:15	5	30	32	38	26	7	1	0	0	0	0	0	0	0	0	139
19:30	1	5	6	16	5	2	0	0	0	0	0	0	0	0	0	35
19:45	2	4	5	12	11	4	0	0	0	0	0	0	0	0	0	38
20:00	2	3	5	7	5	4	1	0	0	0	0	0	0	0	0	27
20:15	2	4	2	8	9	1	1	0	0	0	0	0	0	0	0	30
20:30	7	16	21	43	30	11	2	0	0	0	0	0	0	0	0	130
20:45	1	4	7	13	4	0	2	0	0	0	0	0	0	0	0	31
21:00	0	3	6	10	3	1	1	1	0	0	0	0	0	0	0	25
21:15	1	2	6	7	8	5	0	0	0	0	0	0	0	0	0	29
21:30	0	4	6	8	8	0	0	0	0	0	0	0	0	0	0	26
21:45	2	13	25	38	23	6	3	1	0	0	0	0	0	0	0	111
22:00	0	1	8	7	10	1	0	0	0	0	0	0	0	0	0	27
22:15	1	5	9	9	2	1	0	0	0	0	0	0	0	0	0	27
22:30	1	2	9	2	1	0	0	0	0	0	0	0	0	0	0	15
22:45	0	1	12	8	2	1	0	0	0	0	0	0	0	0	0	24
23:00	2	9	38	26	15	3	0	0	0	0	0	0	0	0	0	93
23:15	0	4	6	7	6	1	2	0	0	0	0	0	0	0	0	26
23:30	1	1	4	4	4	0	0	0	0	0	0	0	0	0	0	14
23:45	1	1	3	3	1	0	0	0	0	0	0	0	0	0	0	9
23:59	1	2	5	6	4	1	0	0	0	0	0	0	0	0	0	19
24:00	3	8	18	20	15	2	2	0	0	0	0	0	0	0	0	68
24:15	2	1	3	4	3	2	0	0	0	0	0	0	0	0	0	15
24:30	0	0	0	4	2	0	0	1	0	0	0	0	0	0	0	7
24:45	0	1	0	6	2	0	0	0	0	0	0	0	0	0	0	9
24:59	0	1	2	4	1	0	0	0	0	0	0	0	0	0	0	8
25:00	2	3	5	18	8	2	0	1	0	0	0	0	0	0	0	39
25:15	1	1	6	3	1	0	0	0	0	0	0	0	0	0	0	12
25:30	0	1	5	2	1	0	0	0	0	0	0	0	0	0	0	9
25:45	0	0	3	5	4	0	0	1	0	0	0	0	0	0	0	13
25:59	0	0	2	2	2	0	0	0	0	0	0	0	0	0	0	6
Total	1	2	16	12	8	0	0	1	0	0	0	0	0	0	0	40
Grand Total	52	173	335	383	234	61	17	4	0	0	0	0	0	0	0	1259

15th Percentile : 20 MPH
 50th Percentile : 27 MPH
 85th Percentile : 34 MPH
 95th Percentile : 38 MPH

Stats
 Mean Speed(Average) : 27 MPH
 10 MPH Pace Speed : 21-30 MPH
 Number in Pace : 1008
 Percent in Pace : 56.80%
 Number of Vehicles > 25 MPH : 1021
 Percent of Vehicles > 25 MPH : 57.50%

Ira Avenue
Btwn Loveland St & Lubec St

Site Code: 6603 Ira Avenue

Page 1

Start Time	22-May-22 Sun	Northeast		Hour Totals		Southwest		Hour Totals		Combined Totals	
		Morning	Afternoon	Morning	Afternoon	Morning	Afternoon	Morning	Afternoon	Morning	Afternoon
12:00		8	12			9	14				
12:15		5	22			6	22				
12:30		4	17			1	19				
12:45		2	19	19	70	5	21	21	76	40	146
1:00		0	11			5	15				
1:15		4	13			6	15				
1:30		2	14			8	19				
1:45		4	16	10	54	3	11	22	60	32	114
2:00		2	18			2	13				
2:15		4	11			1	16				
2:30		0	16			2	19				
2:45		1	13	7	58	1	20	6	68	13	126
3:00		0	9			1	19				
3:15		0	17			0	16				
3:30		1	19			2	10				
3:45		2	13	3	58	1	15	4	60	7	118
4:00		1	20			1	17				
4:15		2	14			2	20				
4:30		0	12			1	19				
4:45		0	18	3	64	2	15	6	71	9	135
5:00		1	17			1	17				
5:15		0	12			0	18				
5:30		2	16			2	22				
5:45		2	13	5	58	2	24	5	81	10	139
6:00		2	22			2	13				
6:15		0	21			1	17				
6:30		5	16			2	11				
6:45		5	17	12	76	4	13	9	54	21	130
7:00		7	16			3	15				
7:15		3	19			3	6				
7:30		2	14			4	15				
7:45		6	17	18	66	4	9	14	45	32	111
8:00		11	16			6	11				
8:15		6	12			8	15				
8:30		3	9			10	6				
8:45		5	14	25	51	11	10	35	42	60	93
9:00		6	17			4	9				
9:15		15	4			9	10				
9:30		19	4			12	5				
9:45		11	11	51	36	15	8	40	32	91	68
10:00		14	9			15	6				
10:15		15	4			9	3				
10:30		16	5			7	4				
10:45		11	3	56	21	13	5	44	18	100	39
11:00		12	6			10	6				
11:15		14	5			13	4				
11:30		13	7			15	6				
11:45		14	6	53	24	11	0	49	16	102	40
Total		262	636			255	623			517	1259
Percent		29.20%	70.80%			29.00%	71.00%			29.10%	70.90%
Grand Total		262	636			255	623			517	1259
Percent		29.20%	70.80%			29.00%	71.00%			29.10%	70.90%

ADT

ADT 1,776

AADT 1,776