



CITY of BELL



ASSEMBLY MEMBER
Anthony Rendon
DISTRICT 63



THE CITY
Safe, Healthy, and Attractive



South Central Los Angeles
Regional Center
for persons with
developmental disabilities, inc.



CD TECH
CREATING COMMUNITIES THAT WORK



Alliance
for A Better
Community



Los Angeles County Supervisor
HILDA L. SOLIS
First District • Chair Pro Tem



GATEWAY CITIES
COUNCIL OF GOVERNMENTS



Human Services Association

eliminating racism
empowering women
ywca
greater los angeles



MAOF
MEXICAN AMERICAN OPPORTUNITY FOUNDATION



ASSEMBLY MEMBER
Reginald Byron Jones-Sawyer, Sr.
DISTRICT 59

**Families
In Schools**
Building Partnerships for Student Success



LATINO
EQUALITY
ALLIANCE

**ALIANZA
LATINA POR
LA IGUALDAD**

One People
One Community
**Southeast
Community
Development
Corporation**

Lucille Roybal-Allard
Congresswoman, 40th District

CONGRESSWOMAN
**Linda
SÁNCHEZ**
REPRESENTING CALIFORNIA'S
38TH DISTRICT



CALIFORNIA'S
LOW COST
AUTO INSURANCE



COFEM
Council of Mexican Federations



**The Children's
Partnership**

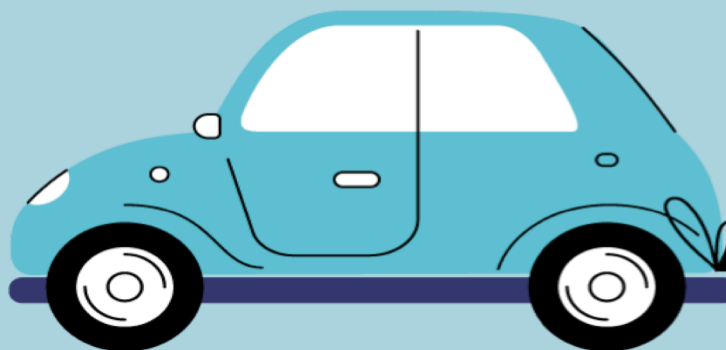
**Parent
Engagement
Academy**

AltaMed
QUALITY CARE WITHOUT EXCEPTION™

WE COUNT LA Southeast LA CENSUS CAR CARAVAN!

Wednesday, June 17, 2020

**WE COUNT
LOS ANGELES**
Our Community. Our Census.



CENSUS
2020

#WeCountLA
#2020Census

This will be a multi-city, multi-partner caravan. Please uphold COVID19 physical and social distancing guidelines.

WE COUNT
LOS ANGELES

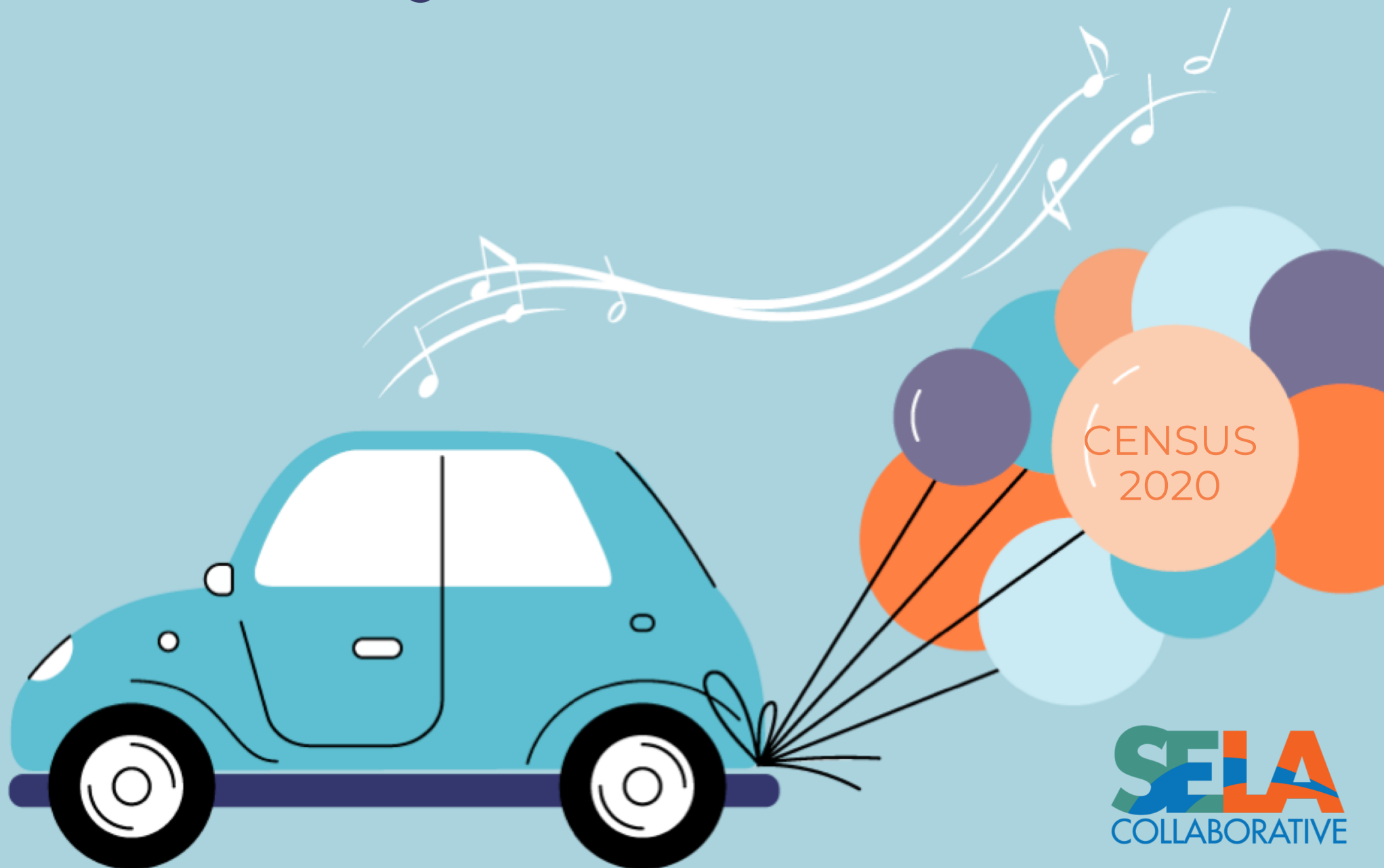
Our Community. Our Census.

WE COUNT LA

Southeast LA

CENSUS CAR CARAVAN!

Wednesday, June 17, 2020



SELA
COLLABORATIVE